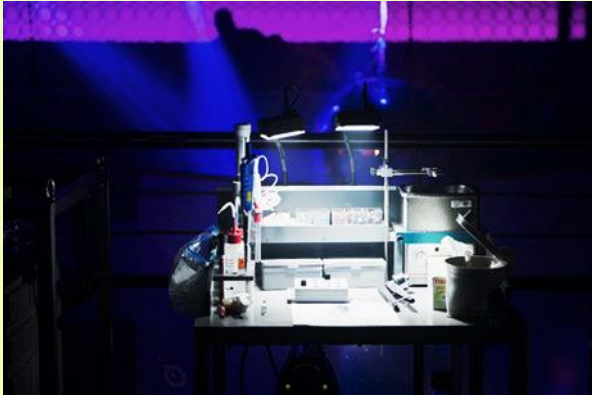


Drug-Checking in Zurich

results, alerts, monitoring and counselling: focusing on cocaine



15.05.2019, Club Health Conference Amsterdam

Matthias Humm, City of Zurich, saferparty

Content

- Saferparty.ch
 - Activities 2018
- Monitoring
 - Analysed substances
 - Cocaine - prevalences
 - Cocaine - composition
- Counselling
 - Targets
 - Handing in the substance
 - Communicating the results
 - On-site / outpatient
 - Online



Saferparty – activities 2018

Drug Information Center
information, counselling and
outpatient drug-checking



- 2109 contacts
- 913 counsellings
- 1903 analysis (HPLC/GC/MS)

Mobile Drug-Checking
information, counselling and
on-site drug checking



- 10 on-site drug-checking
- 1500 contacts
- 723 counsellings
- 296 analysis (HPLC)

Web Page
substance-information,
substance-alerts and
online-counselling



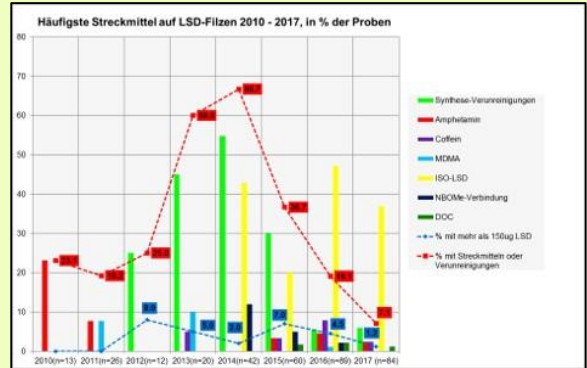
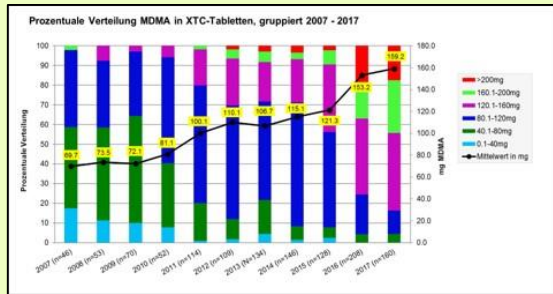
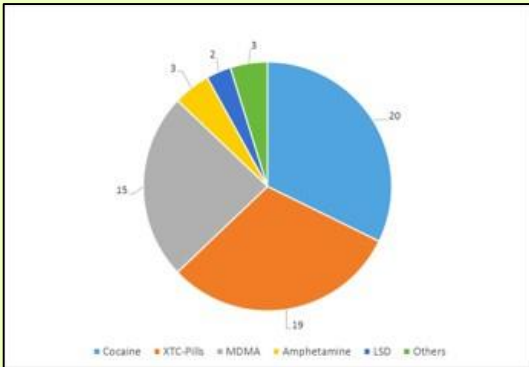
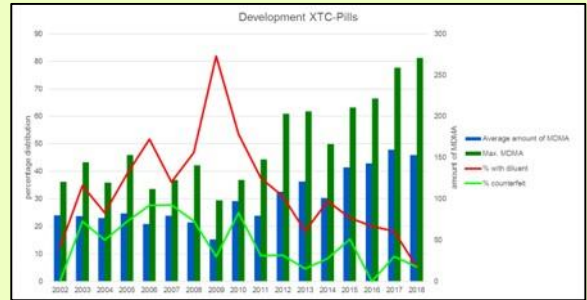
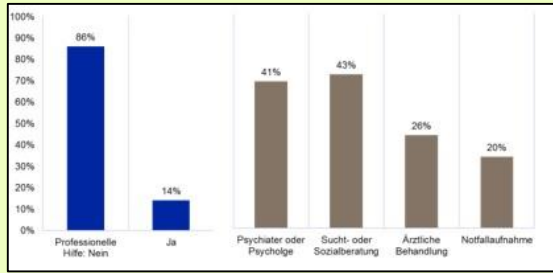
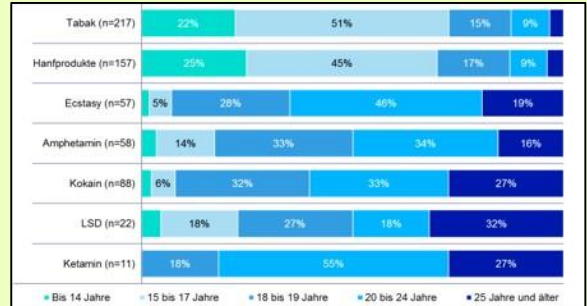
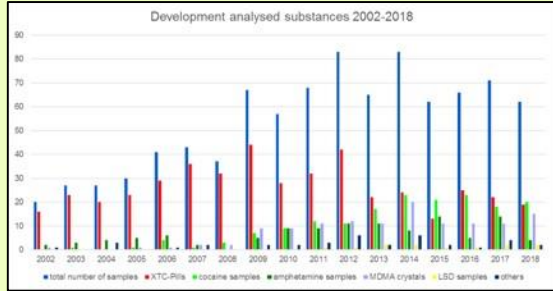
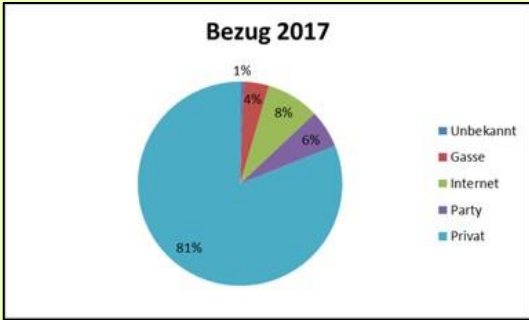
- 404'000 unique visitors
- 150 online-counsellings
- Use of social media
(FB, Instagram)



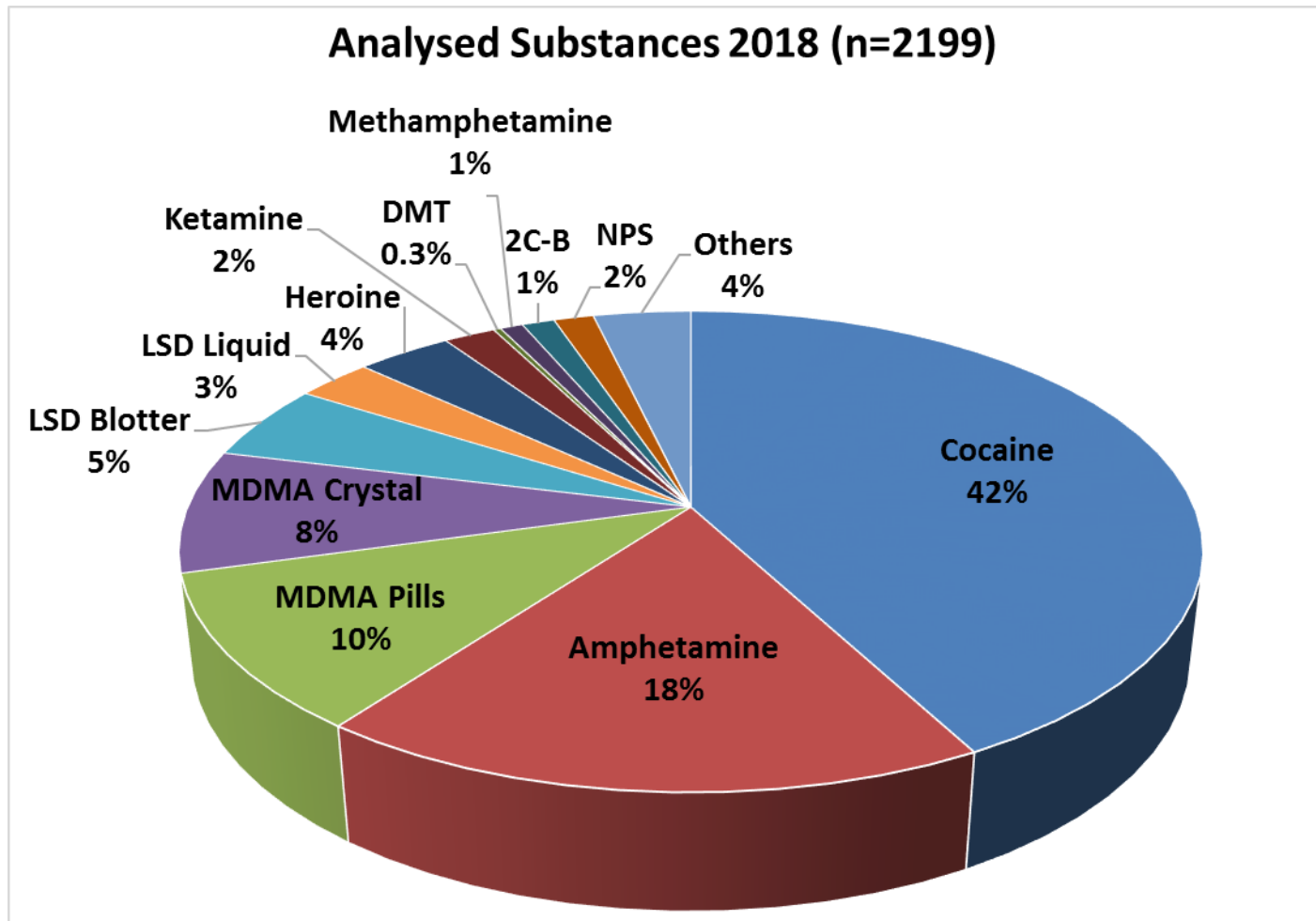
Stadt Zürich
Soziale Einrichtungen und Betriebe



Monitoring

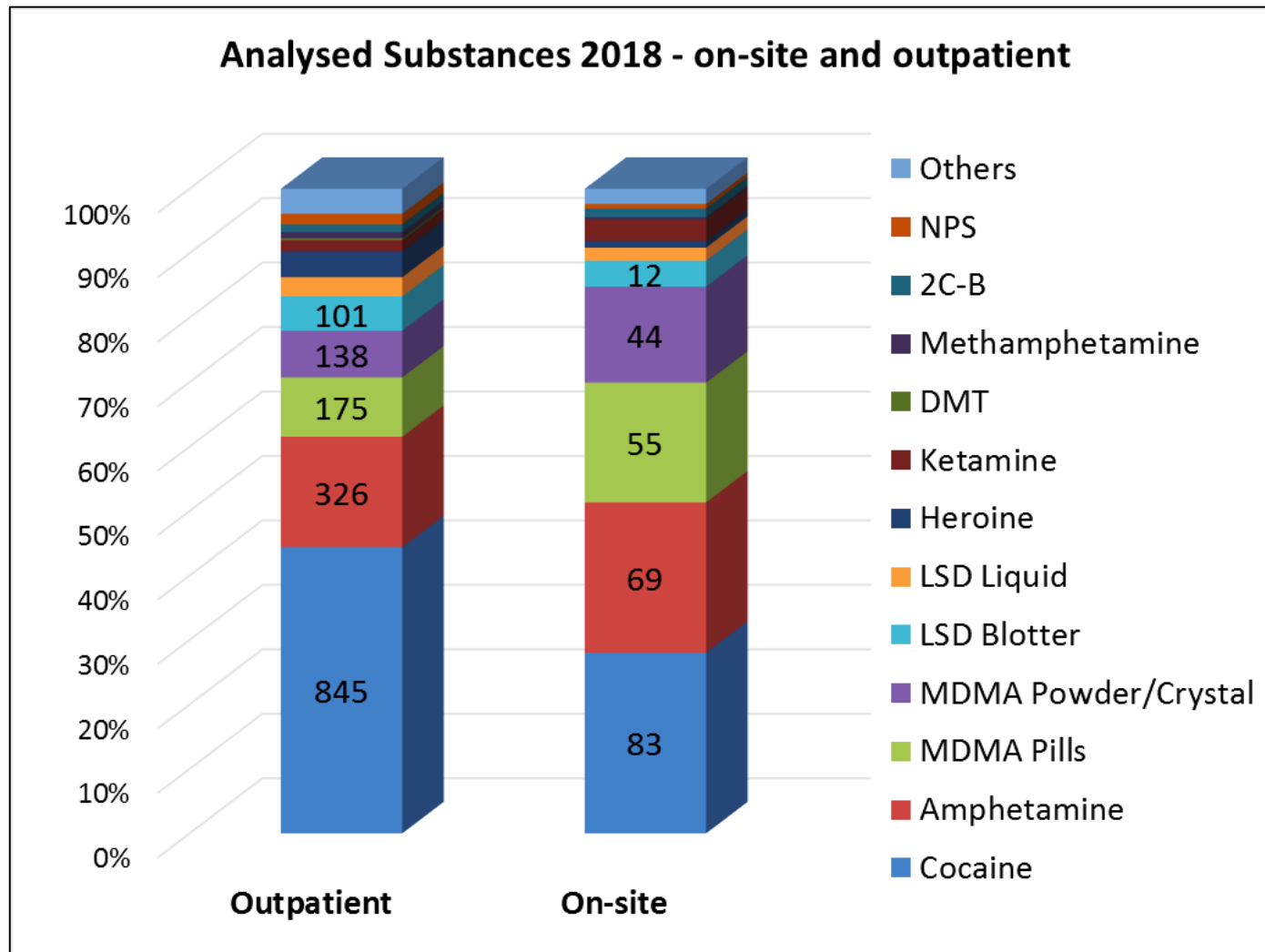


Analysed substances



- On-site and outpatient: **2199 analysis**
- Therefore **264 published alerts** due to diluents, unexpected compounds and/or high dosage

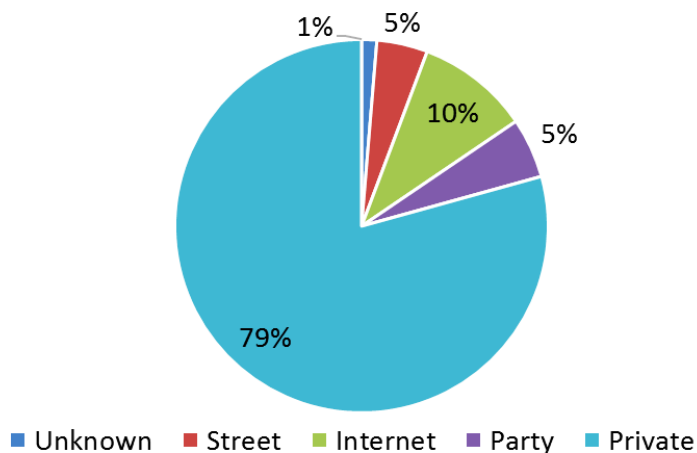
Analysed substances – outpatient / on-site



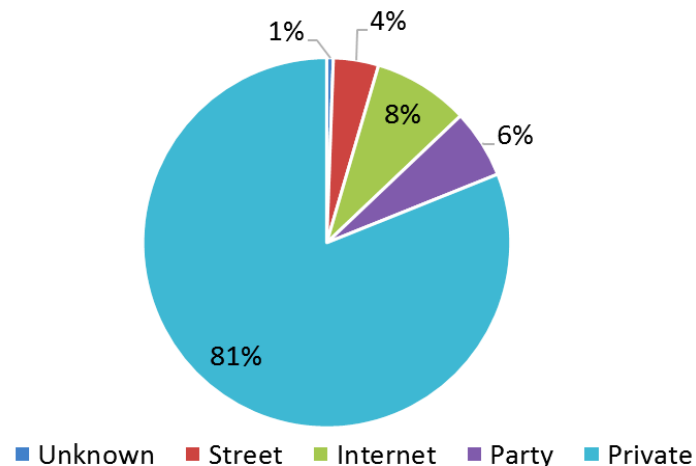
- Outpatient: relatively more cocaine, On-site: relatively more MDMA and amphetamine
- The two services reach diverse groups

Analysed substances – supply source

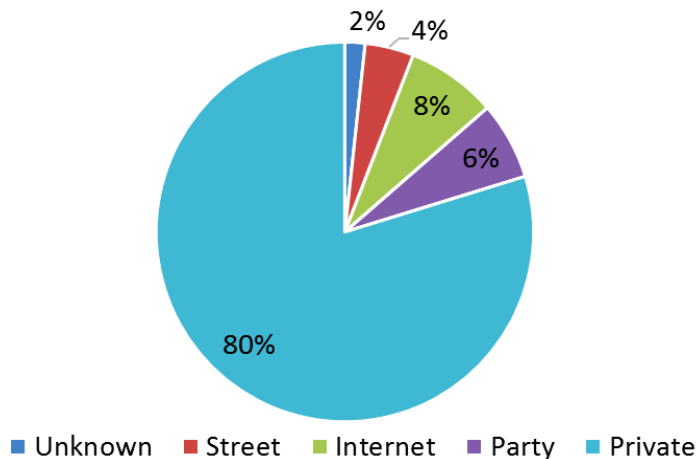
Analysed substances 2018 - supply source



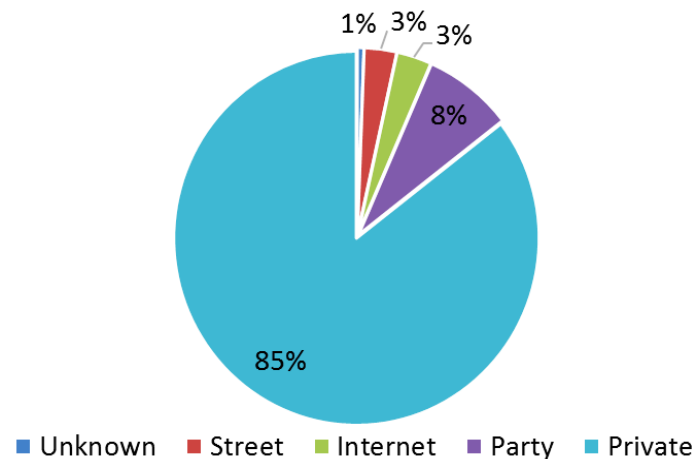
Analysed substances 2017 - supply source



Analysed substances 2016 - supply source



Analysed substances 2015 - supply source



- Internet: from 3% in 2015 to 10% in 2018, Private: still the main supply source



Four Swiss cities among Europe's top ten for cocaine consumption

The Local Switzerland
news@thelocal.ch
@thelocalswitzer

14 March 2019
20:46 CET+01:00

cocaine

drug use

Share this article



There is more than one type of snow in Switzerland. File photo: [Depositphotos](#)

Zurich, St Gallen, Geneva and Basel all continue to be among the top ten cities for cocaine use in Europe, data published on Thursday suggests.

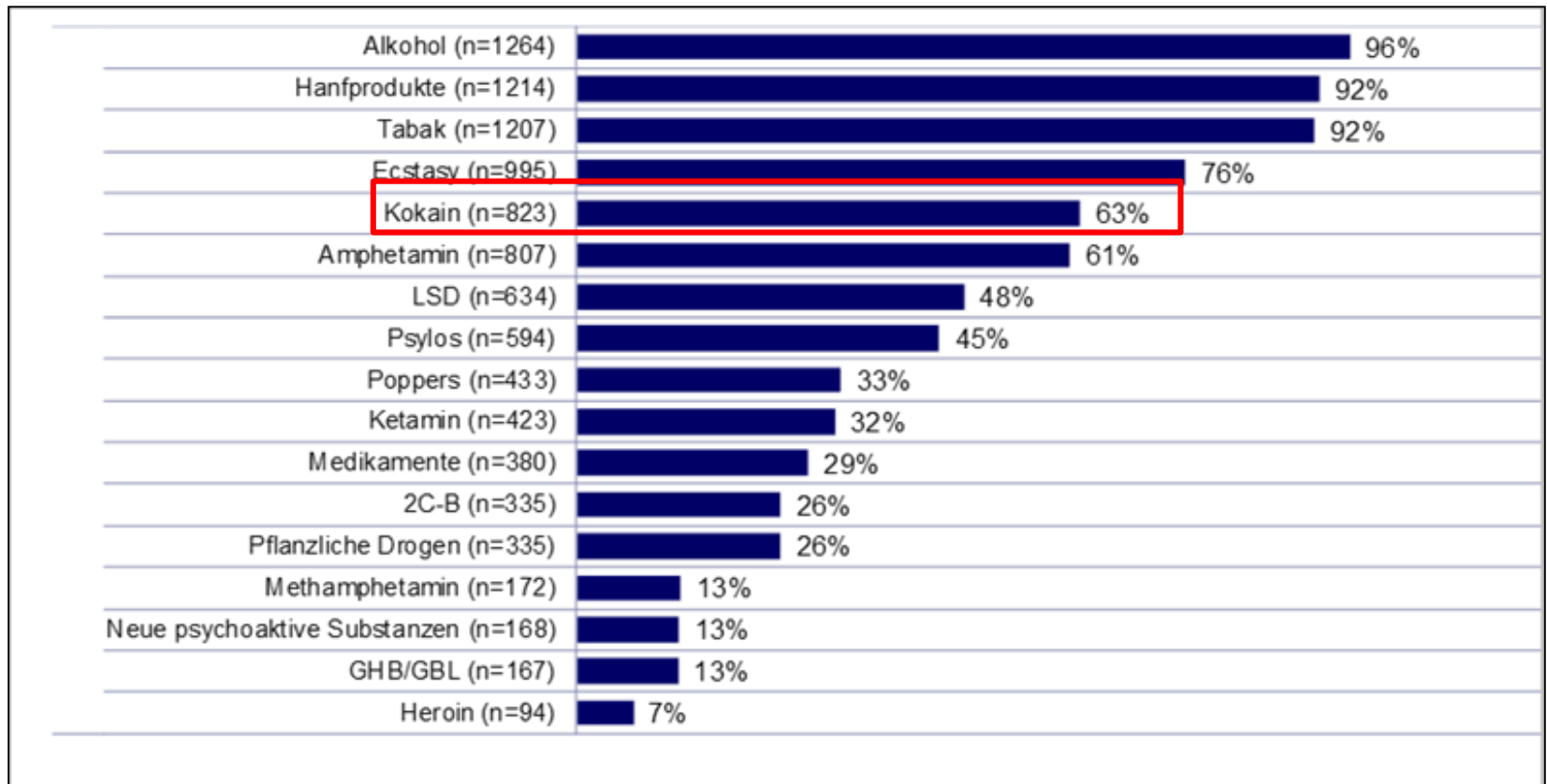


Stadt Zürich
Soziale Einrichtungen und Betriebe

**safer
party
.ch**

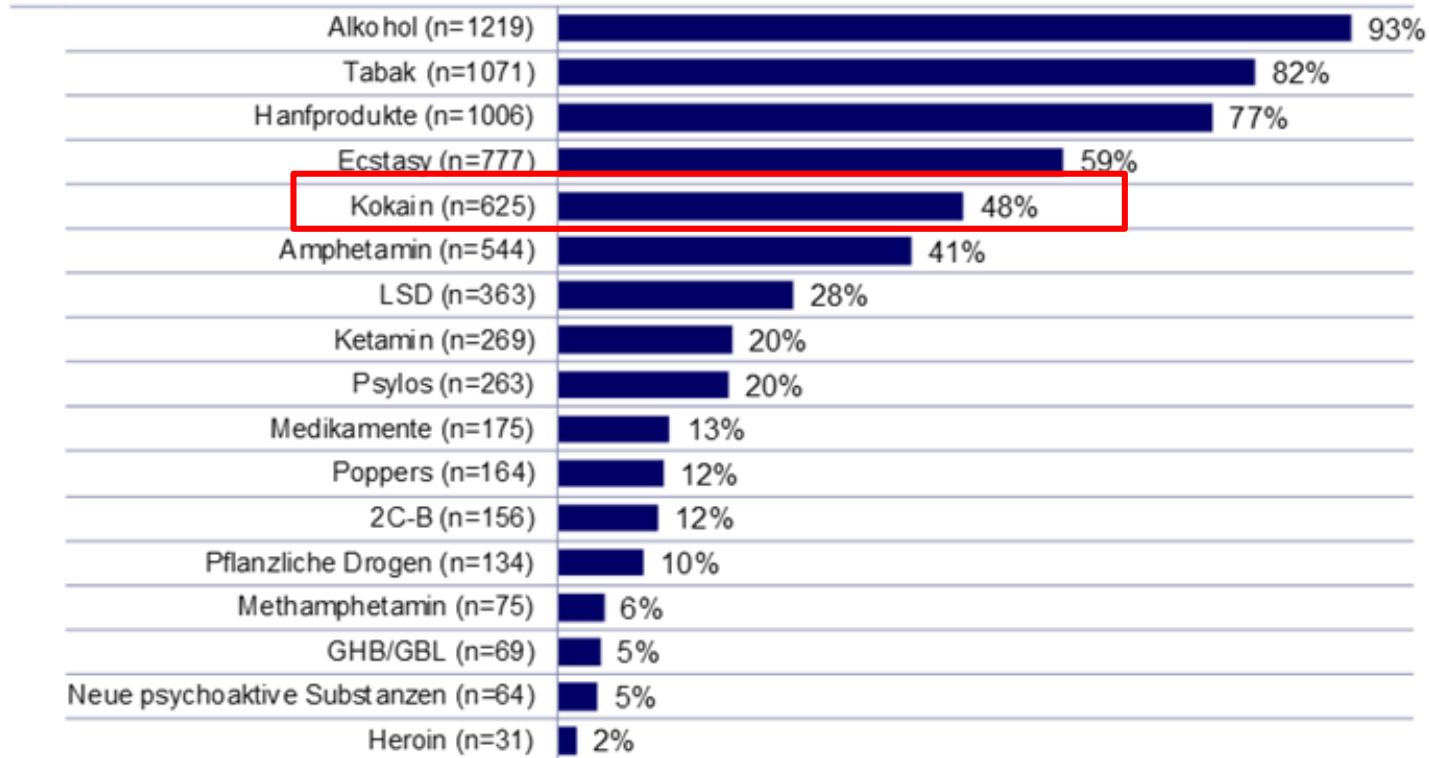
Cocaine prevalence

Lifetime prevalence: 63 % (non-representative)



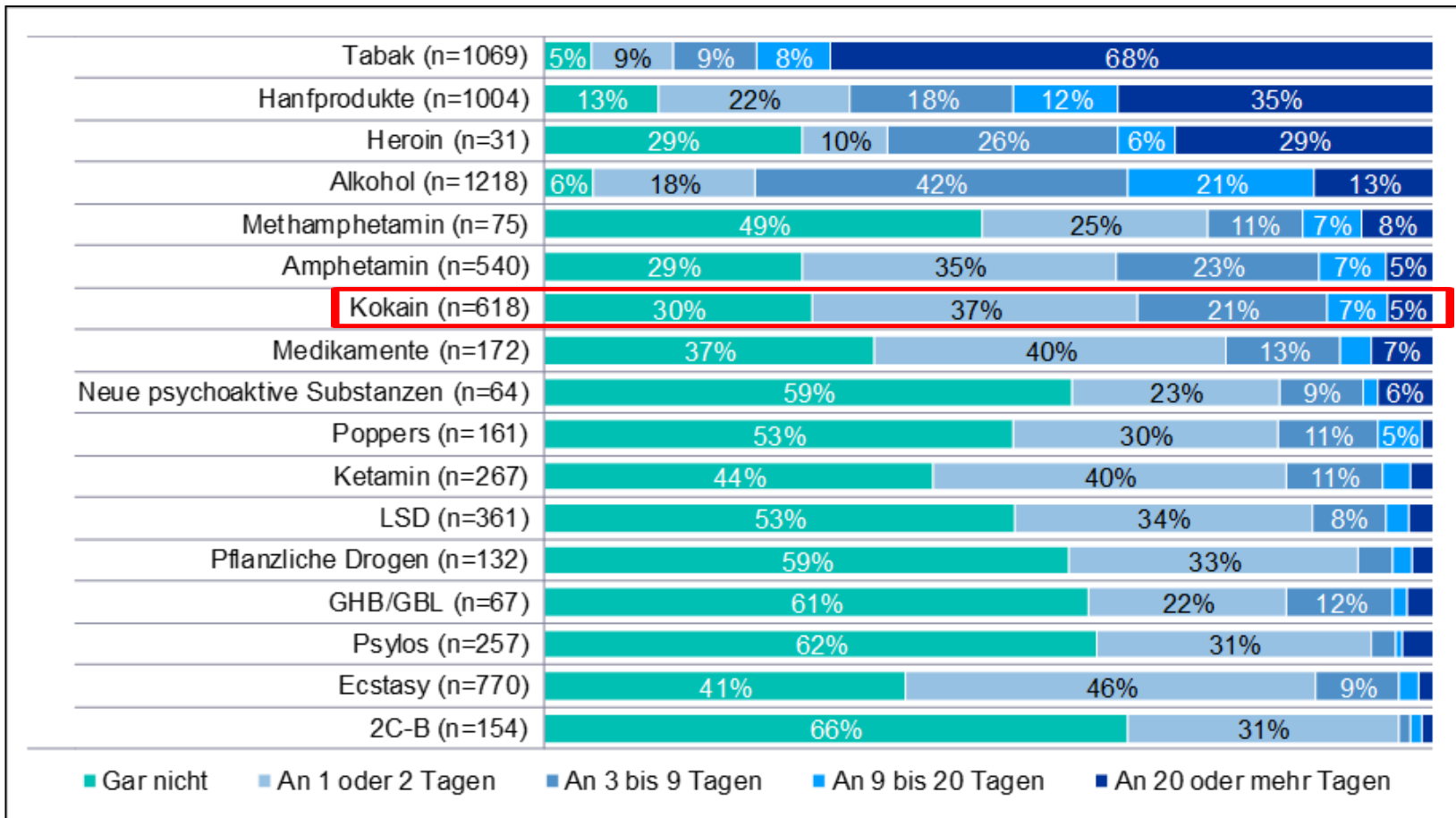
Cocaine prevalence

12-month prevalence: 48 % (non-representative)



Cocaine prevalence

30-days prevalence (non-representative)



- 37% 1 to 2 days, 21% 3 to 9 days, 7% 9 to 20 days, 5% 20 or more days

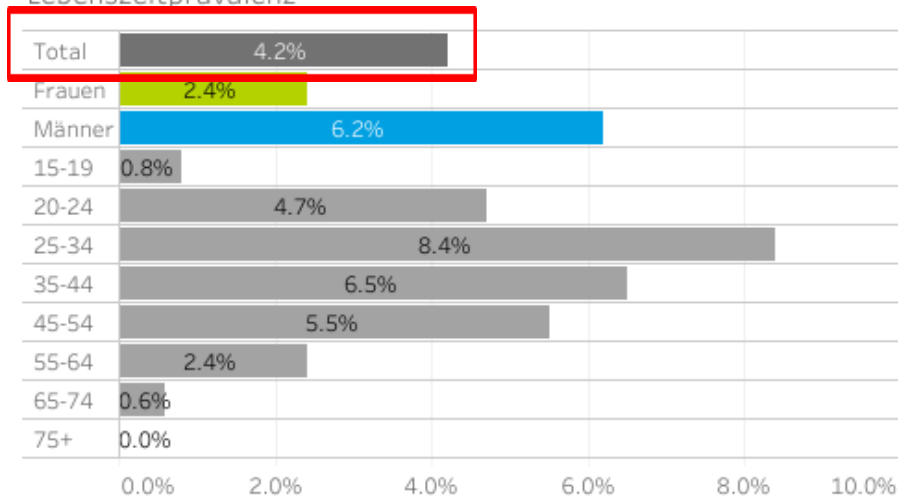
Cocaine prevalence – representative inquiry

Kokainkonsum, nach Geschlecht und Alter
(2016)



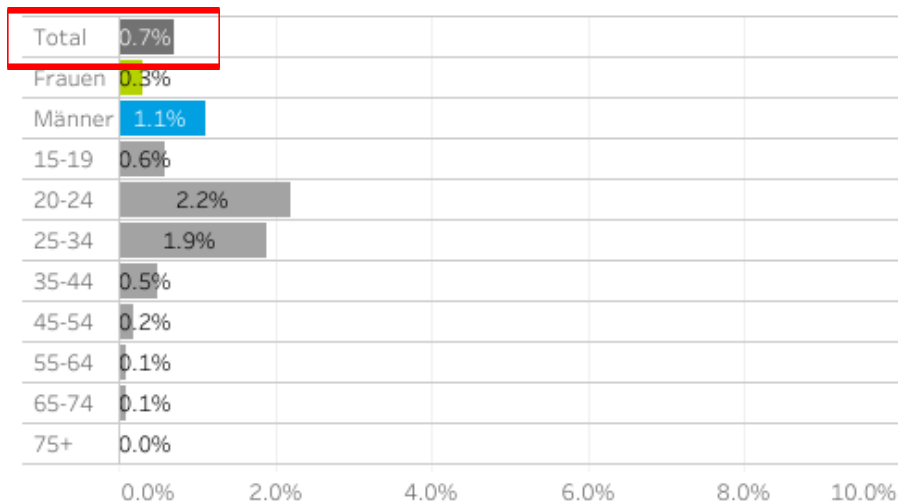
Lebenszeitprävalenz

Lifetime prevalence: 4.2 %



12-month prevalence: 0.7 %

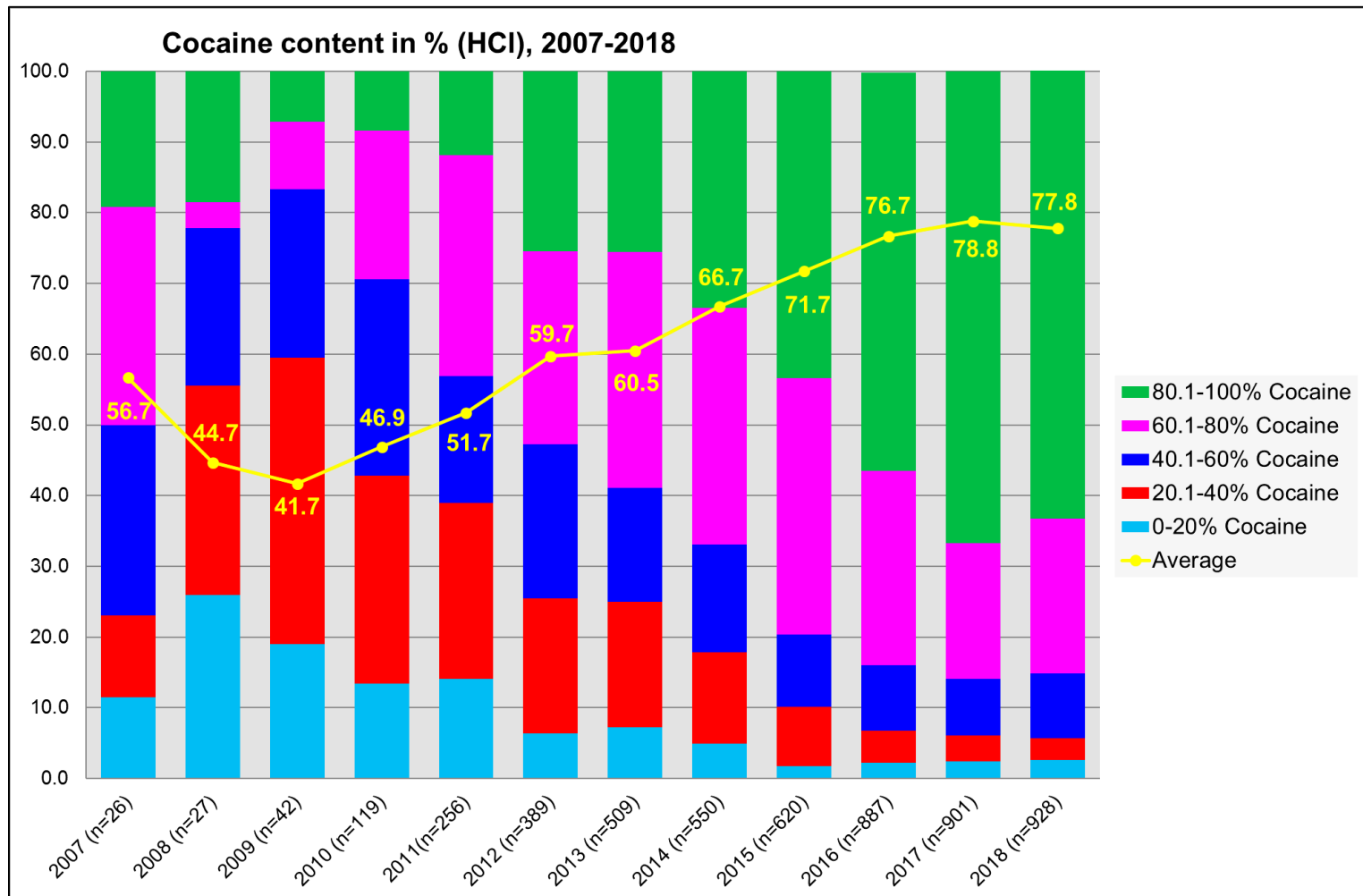
12-Monatsprävalenz



Stadt Zürich
Soziale Einrichtungen und Betriebe

**safer
party
.ch**

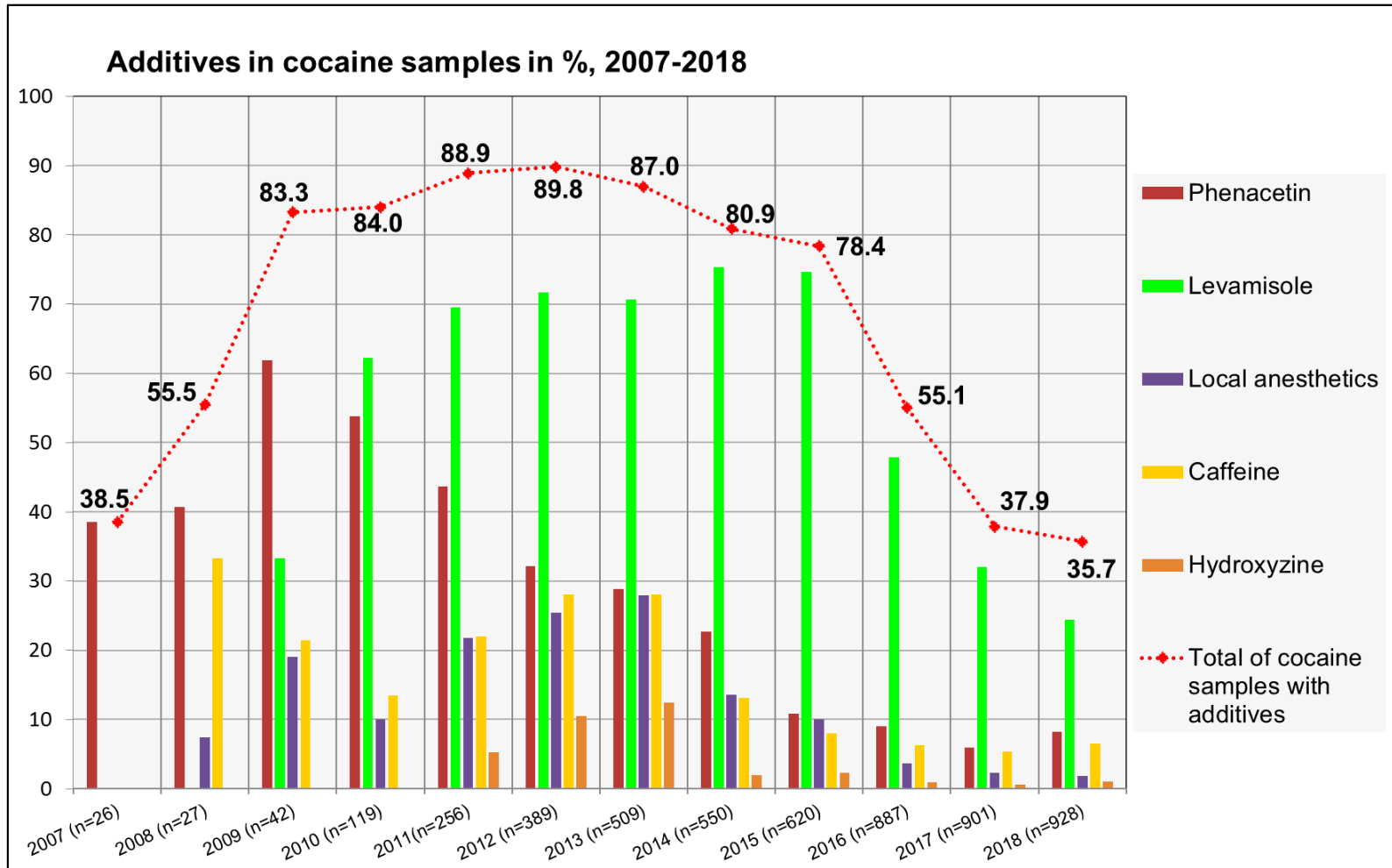
Cocaine - composition



- Content was increasing since 2009
- 2018 first time decreased content



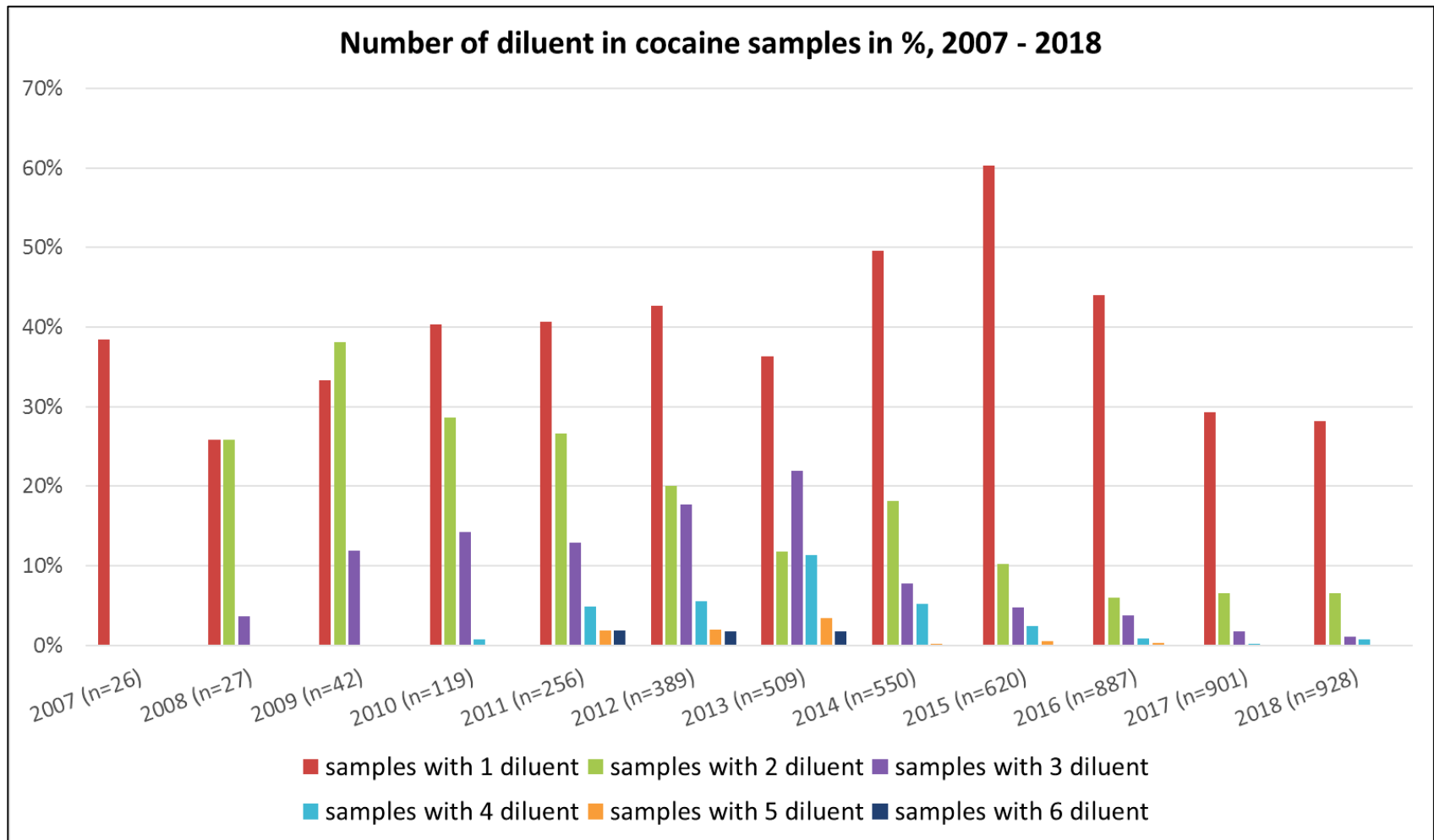
Cocaine - composition



- Decrease of samples with additives (35.7 % still contained additives)
- Decrease of levamisole (25 % in 2018)
- Increase of phenacetine (8 % in 2018)



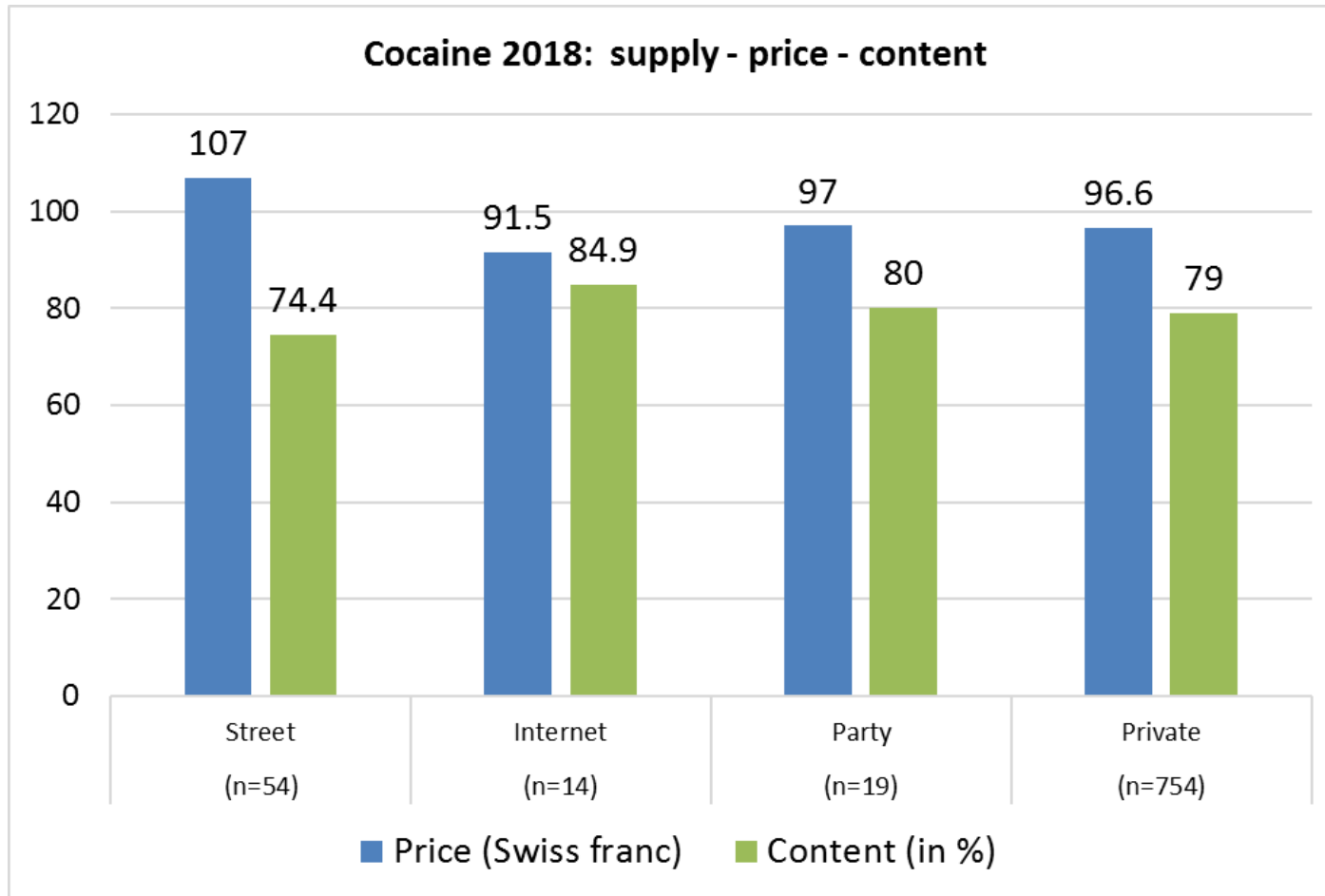
Cocaine - composition



- Decrease of samples with various diluent
- Individual samples still up to four different diluent
- 2018 mostly 1 diluent (28.2%) or two (6.5%) diluent



Cocaine - composition



- Little correlation between price, content and supply source
- Internet: lowest price, highest content
- Street: highest price, lowest content
- Party / Private: hardly any differences



Counselling and information giving



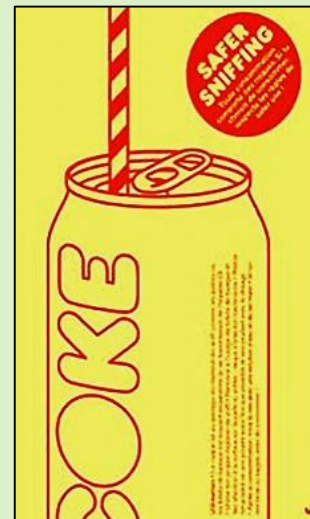
Warnung: extrem hochdosierte XTC's

Logo	Tic Tac
Gewicht	385.1 mg
Grösse	11.1 x 7.1 mm
Dicke	5.1 mm
Bruchrille	Ja
Farbe	Grün
Inhaltsstoffe	MDMA*HCl: 215.6 mg
Getestet in	Zürich (DIZ), 02. April 2019



Risikoeinschätzung

Über 120 mg MDMA*HCl können zu viel sein. Nebenwirkungen wie „Kiefer mahlen“, Augen- und Nervenzucken, bis hin zu Krampfanfällen können auftreten. Bei Überdosierungen steigt die Körpertemperatur stärker an und es können Halluzinationen auftreten. An Folgetagen, nach der Einnahme solch hoher Dosen MDMA, treten vermehrt Depressionen, Konzentrationschwächen, Schlafstörungen und Appetitlosigkeit auf. Die regelmässige Einnahme grosser Mengen MDMA ist neurotoxisch und vergrössert die Wahrscheinlichkeit irreparabler Hirnschäden.



Counselling - targets

- Assessment: (individual) consumption patterns and risks are assessed and discussed
- Early detection of risk behaviour
- Encouragement of the consumer competence
- Sensitization for risks (via safer-use advices)
- Motivation of a (self-) critical reflexion of the consumer behaviour
- Support for stabilization and/or reduction of the consumption
- If required: Triage to continuative supply (therapy, social institution etc.)
- Reduction of fears from highthreshold services

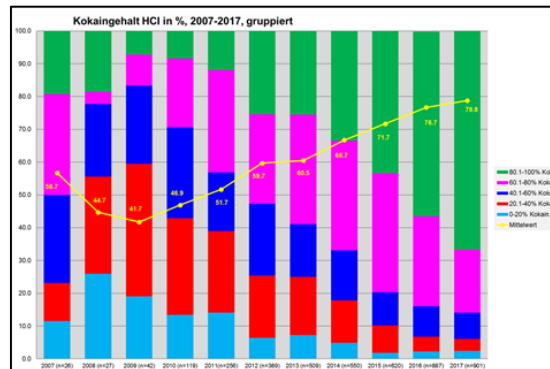
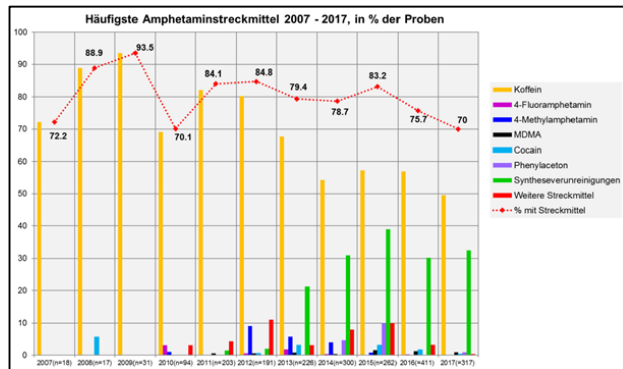
Counselling - handing in the substance

- Compulsive counselling
- General risk assessment
- Questionnaire with a dual function: structuring the interview / data-collection
 - socio-demographic
 - consumption-prevalences
 - consumption patterns
 - impacts on health



Counselling - communicating the results

- Second counselling
- Individual risk assessment
- Explanation of the compound and diluent, mixing drugs, use of medicine, dosage-recommendation etc.
- Individual physical and psychological circumstances (coherent to the particular result) can be included in the counselling



Warnung: extrem hochdosierte XTC's

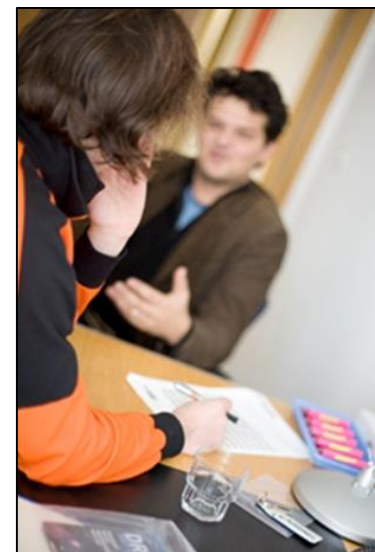
Logo	Transformer
Gewicht	553.2 mg
Grösse	8.7 x 7.7 mm
Dicke	6.4 mm
Bruchrille	Ja
Farbe	Violett
Bemerkungen	Beidseitiges Logo
Inhaltsstoffe	MDMA*HCl: 270.8 mg
Getestet in	Zürich (Mobil), 11. August 2018



Risikoeinschätzung
Über 120 mg MDMA*HCl können zu viel sein. Nebenwirkungen wie „Kiefer mahlen“, Augen- und Nervenzucken, bis hin zu Krampfanfällen können auftreten. Bei Überdosierungen steigt die Körpertemperatur stärker an und es können Halluzinationen auftreten. An Folgetagen, nach der Einnahme solch hoher Dosen MDMA, treten vermehrt Depressionen, Konzentrationsschwächen, Schlafstörungen und Appetitlosigkeit auf. Die regelmässige Einnahme grosser Mengen MDMA ist neurotoxisch und vergrössert die Wahrscheinlichkeit irreparabler Hirnschäden.

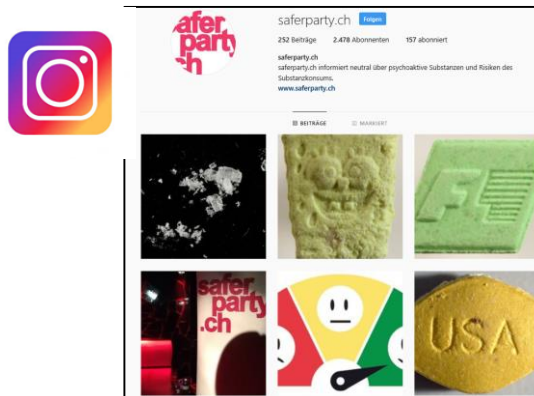
Counselling - on-site / outpatient

On-site	Outpatient
Offer (only) for party goers	Open to all recreational drug users and also affected persons (relatives, friends etc.)
Low-threshold service (at no charge, anonymous, no registration)	Low-threshold service (at no charge, anonymous, no registration)
Nightlife setting: reduced anonymity, under influence of drugs, sounds, crowds	Office setting: high anonymity / privacy , quiet, "sober" visitors
<ul style="list-style-type: none"> • Mostly in groups (little privacy) • Often short- and single contacts • Spontaneous visitors 	Good possibility for relationship-work and triage
Limited possibilities for relationship-work and triage	Possibility for own continuative offers



Counselling – online

- About 35'000 unique visitors per month
- Visited mainly for the alerts
- About 15 online counsellings per month
 - Independence of location, anonymity, self-determination, no prejudice
- Social media (facebook/Instagram): each alert reaches about 3000 persons



Thank you for your attention!

www.saferparty.ch

info@saferparty.ch

diz@zuerich.ch