

# Monitoring drug use at a big dance festival: a case study (2015-2016).



Jochen Schrooten, Martijn Onsia (VAD)

Co-authors: Dr. L. Gremaux; Dr. P. Blanckaert; Prof. P. Calle; Prof. A. van Nuijs;  
Dr. K. Maudens; Peter Jensen.





**What types of drugs  
are present/are used  
at the event?**

**Are new  
psychoactive drugs  
(NPS) being used?**

**What types of drugs  
are most related  
with emergency  
cases?**

Coordination

Peer support / survey

Surveillance

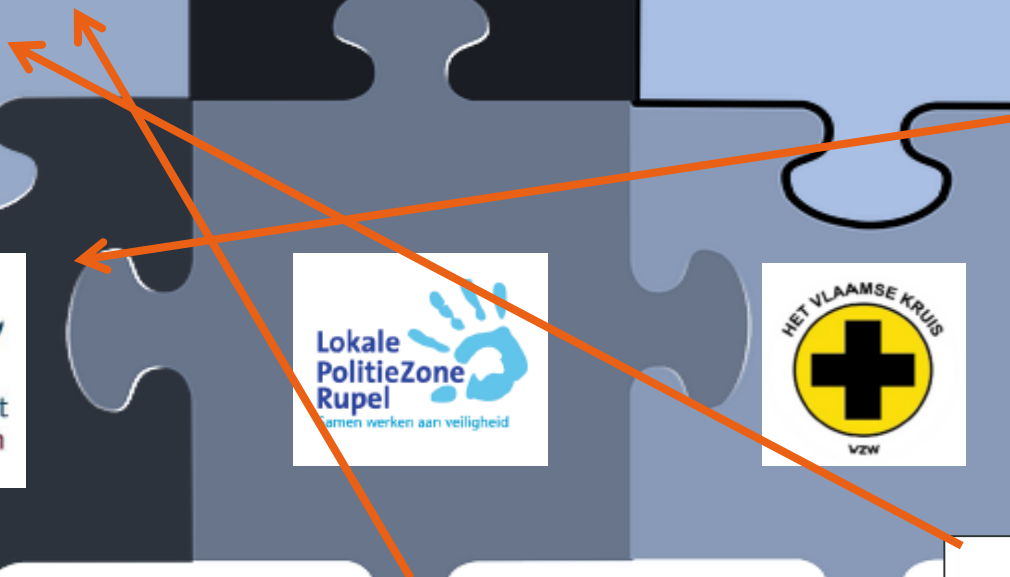


ER  
Blood samples

Waste water  
analysis

Seizures

Drug samples





# Surveillance on the spot



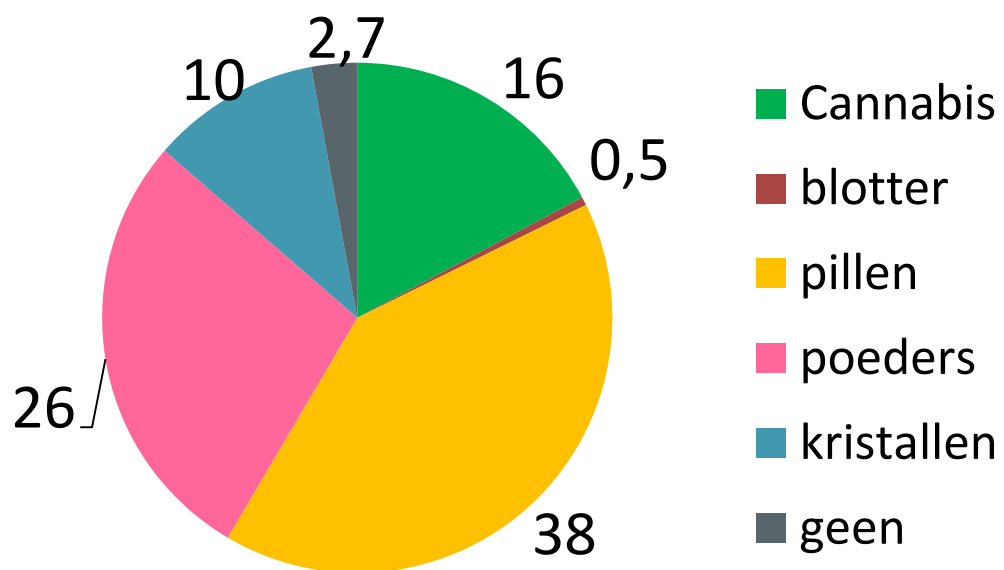




Seizures & amnesty bin collection



## 2015 - 226 samples seized



Analysis with  
LC-GC/MS

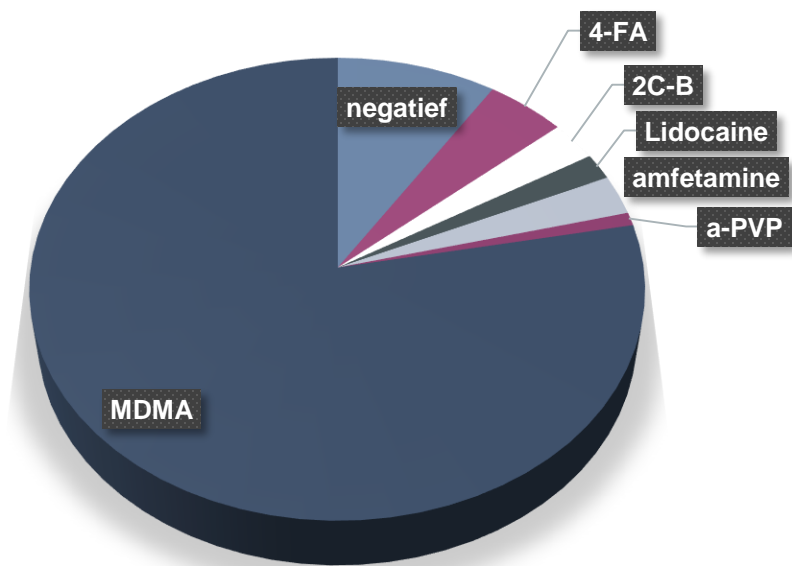






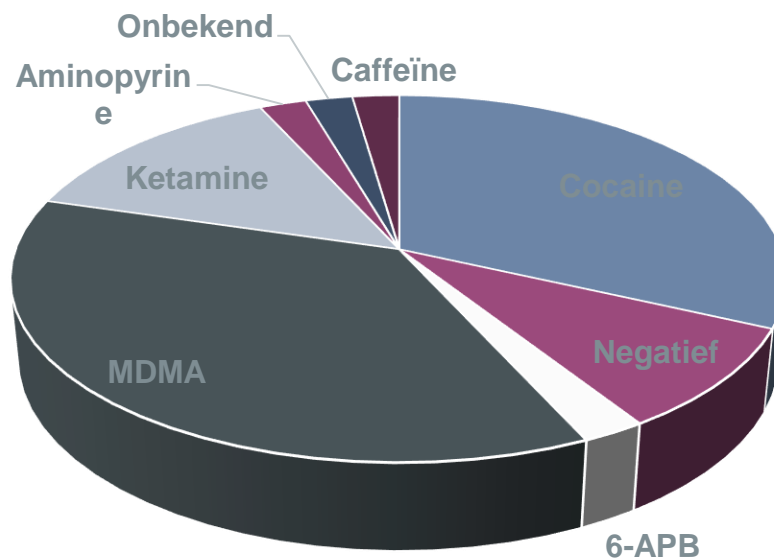
## 2016 - 180 samples seized

### Composition tablets



**109 tablets**

### Composition powders



**44 powders**



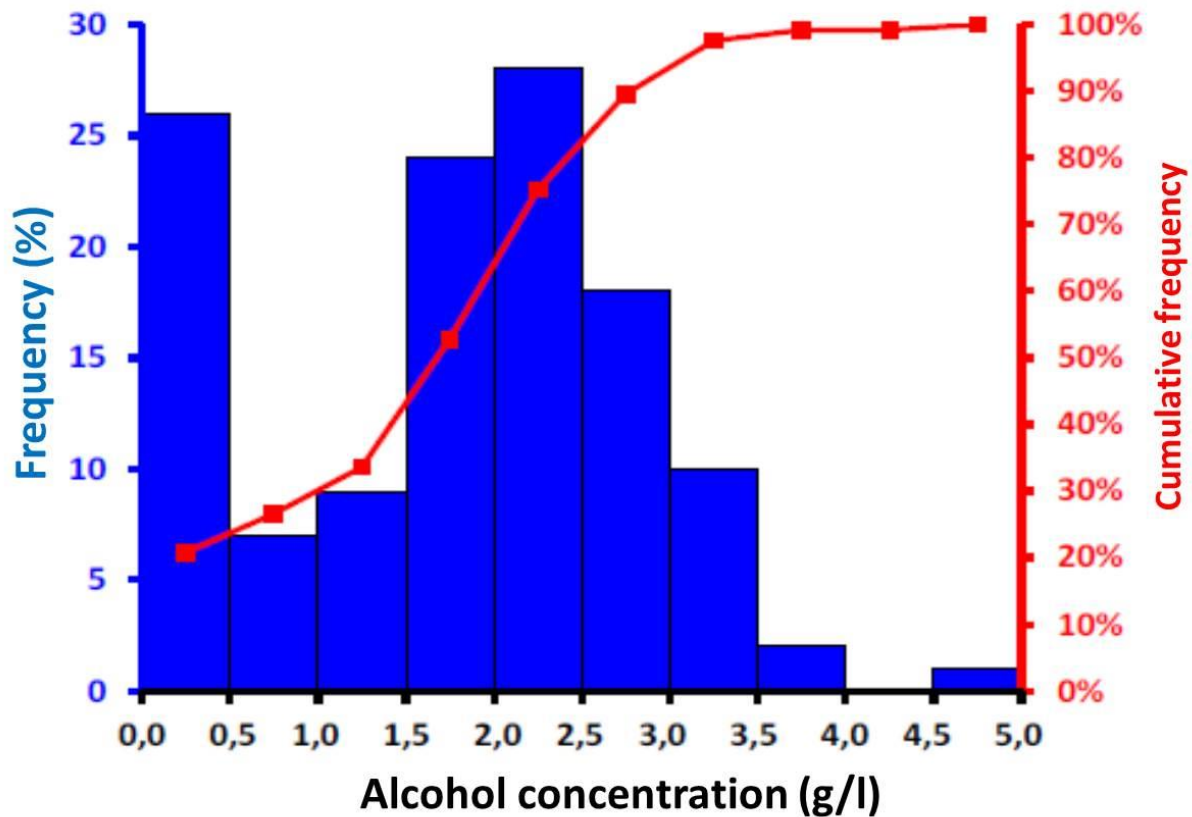
## New Psychoactive Substances?

2015	2016
Ketamine	Ketamine (high quality!)
4-FA	4 FA
GHB	GHB
$\alpha$ -PVP	$\alpha$ -PVP
Flephedrone (4-FMC)	6 APB
diclofenac amide	Aminopyrine
Mix! (PMA, PMMA, ...)	2 CB



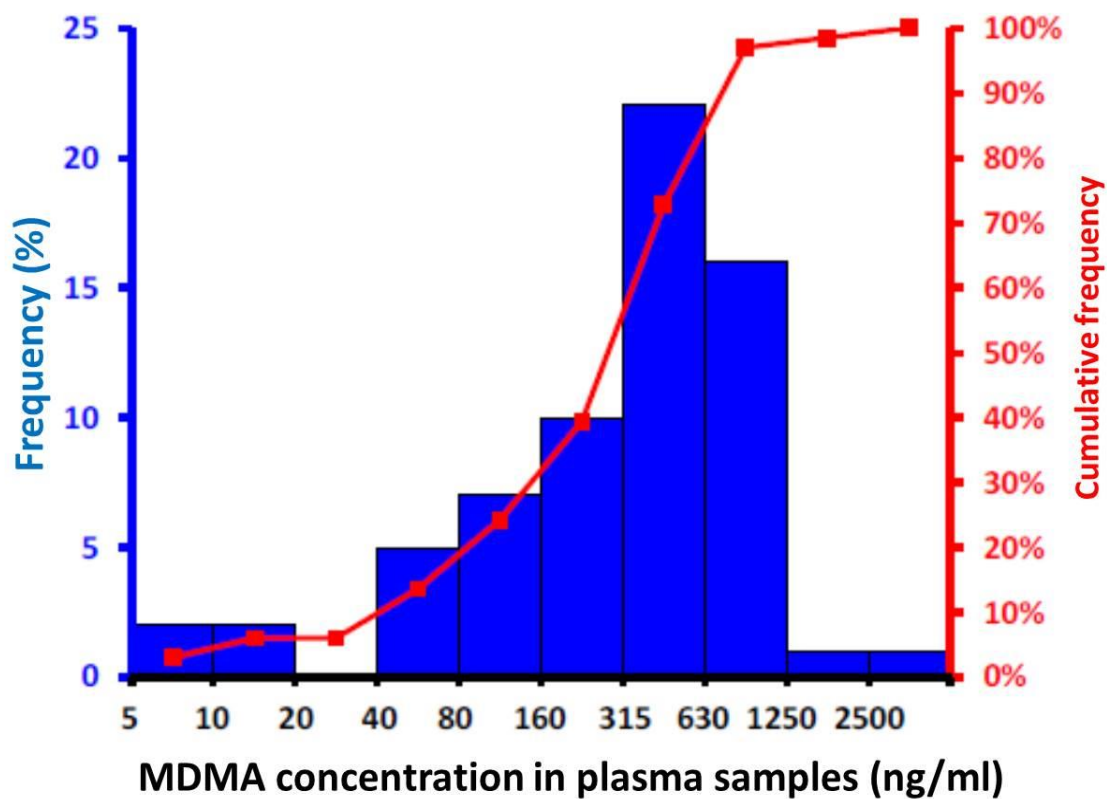
# Blood samples first aid services 2015





**126 patients  
included**





**126 patients  
included**



Drug type	% positive
Alcohol	88%
MDMA	53%
cocaine	14% (alcohol combi)
Ketamine	5.5% (combi)
Amphetamine	7% (combi MDMA / cocaine)
Methamphetamine	2.4%
Morfine/codeïne/..	0.0%





## **New Psychoactive Substances?**

Ketamine (7 cases)

PMMA (3 cases – low concentrations)

4-FA (at least 2 cases)

Alpha-PVP (at least 1 case)

Mystery cases...

➔ NPS not the (main) cause for serious intoxications.



**Toilets & waste water analysis 2015**





Compiling tanks



Collectiesysteem





# Waste water analysis (LC-QTOFMS)

Substance	Timing			Presence confirmed?
	Day 1	Day2	Day3	
Cocaine + metabolites	x	x	x	Confirmed
MDMA	x	x	x	Confirmed
MDA	x	x	x	Confirmed
Methamphetamine	x	x	x	Confirmed
Ketamine + metabolites	x	x	x	Confirmed
Alpha-PVP	x	x	x	Confirmed
4-fluoroamphetamine	x	x	x	Confirmed
Methylone	x	x	x	Confirmed
Ethylone	x	x	x	Confirmed
Methiopropamine	x	x	x	Confirmed
Methoxetamine	x	x	x	Confirmed





**Pooled urine – urine tanks – every 3 hours**





# Pooled urine analysis

Substance	Timing			Presence confirmed?
	Day 1	Day2	Day3	
Caffeine	x	x	x	Confirmed
Cocaine + metabolites	x	x	x	Confirmed
Amphetamine	x	x	x	Confirmed
Methamphetamine	x	x	x	Confirmed
MDMA	x	x	x	Confirmed
MDA	x	x	x	Confirmed
Ketamine	x	x	x	Confirmed
4-fluoroamphetamine	x	x	x	Confirmed
Alpha-PVP	x			Confirmed
Alpha-PVP-metabolite			x	Tentative
AB-PINACA metabolite	x	x	x	Tentative
4-fluoromethamfetamine	x			Tentative
N-acetyl-3,4-MDMC	x	x	x	Tentative



# Safe 'n Sound:

Prevention, harm reduction and peer support:

PARTYDRUGS  
INFO

→ SAFENSOUND.BE



SAFE'N  
SOUND

# Activities Safe 'n Sound

Informationbooth, mobile teams, daily meeting coordination

431 Conversations, 33 hours!

82 questionnaires, 50 partyquiz, 61 xtc quiz

1529 english leaflets, 557 Dutch leaflets, 4400 condoms





# Experiences Safe 'n Sound

Positive reactions volunteers

Usefull exchange info

Harm reduction + zero tolerance!

Communication is difficult but possible



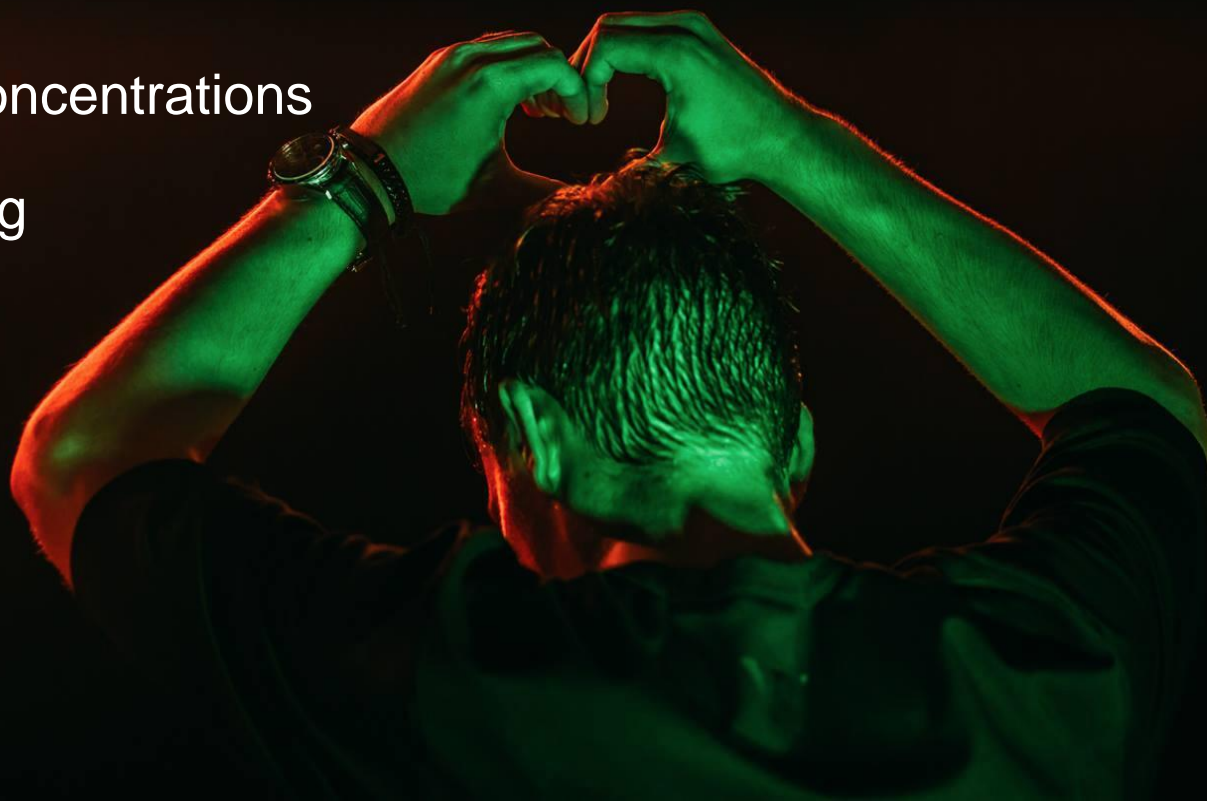
# Conclusions drug use

Different approaches confirm each other

Use of NPS is present but small

Main concerns:

- MDMA high concentrations
- Ketamine rising
- Polydrug use





Rules

POLITIE  
CONTROLE

Enforcement

**Coherent  
drugpolicy  
@ events**

Prevention  
harm  
reduction

PARTYDRUGS  
INFO  
→ SAFENSOUND.BE

First Aid

Monitoring



180

TAGE

18

STUNDEN

20

MIN

3

SEK



urban development night time economy clubculture health mobility gender security

2017 STADT NACH ACHT

KONFERENZ ZUR NACHT

BERLIN NIGHT TIME CONFERENCE

9. - 11. November 2017 Berlin