

ONE YEAR ON: THE PSYCHOACTIVE SUBSTANCES ACT AND THE SCOTTISH DRUG SCENE

Vicki Craik – NPS and Training Coordinator (vicki@crew2000.org.uk)

Who are Crew?

- ▣ Scottish sexual health and drug charity established in 1992.
- ▣ We neither condemn nor condone drug use but believe there are ways to reduce drug related harm.





Outreach



Drop-in



Training



Support Services



Online

Before the Act

- ❑ At least 100 shops selling across Scotland
- ❑ People of all ages and walks of life
- ❑ Most concerns around stimulants and SCRA



Effects of legal NPS

- ❑ Anti-social behaviour
- ❑ Discarded sharps
- ❑ Psychosis
- ❑ Acute behavioural disturbances
- ❑ Increased crime
- ❑ Bacterial infections
- ❑ Blood borne viruses



10APR15

Ethylphenidate
TCDO



Ethylphenidate
TCDO Update

27JUN15

16OCT15

Op Alexander



MPA TCDO

27NOV15

26MAY16

Psychoactive
Substances
Act 2016



?



WEBSITE IS CLOSED FOR GOOD

**Legal Highs World is No More, We have now closed for good.
Thank you for your Business**

WEBSITE IS CLOSED FOR GOOD

**Chems R Us is No More, We have now closed for good.
Thank you for your Business**



MARKET

NG PRODUCTS

FORUM

ACCOUNT

0.00 BTC

CART 0

HI, THEINTERNETZ

ORDERS 0

MESSAGES 0

FAVOURITES ?

Search

Items



Listings: 2986

DRUGS(532)

Benzos (13)

Cannabis (225)

Dissociatives (5)

Ecstasy (57)

Intoxicants (0)

Opioids (49)

Other (33)

Precursors (0)

Prescription (35)

Psychedelics (43)

Stimulants (68)

Tobacco (4)

APPAREL (0)

ART (0)

BOOKS & MAGAZINES (0)

Filter: All Products



MDMA NR.1

Mr. Nice Guy (T1000/100%)

1.00 g

(50.00 EUR)

0.2409 BTC



1g MDMA Crystal 94%

Wilhelm_Tell (127T/99.4%)

Ships from: Switzerland
1.00 g

(55.00 CHF)

0.2533 BTC



10g MDMA Crystal 94%

Wilhelm_Tell (127T/99.4%)

Ships from: Switzerland
10.00 g

(400.00 CHF)

1.8425 BTC



50g MDMA Crystal 94%

Wilhelm_Tell (127T/99.4%)

Ships from: Switzerland
50.00 g

(1,500.00 CHF)

6.9097 BTC



English

BTC

Grams

OK

SAFE USE

MAKE MONEY

ABOUT ME & MY SHOP

CONTACT ME

FOUNDATION

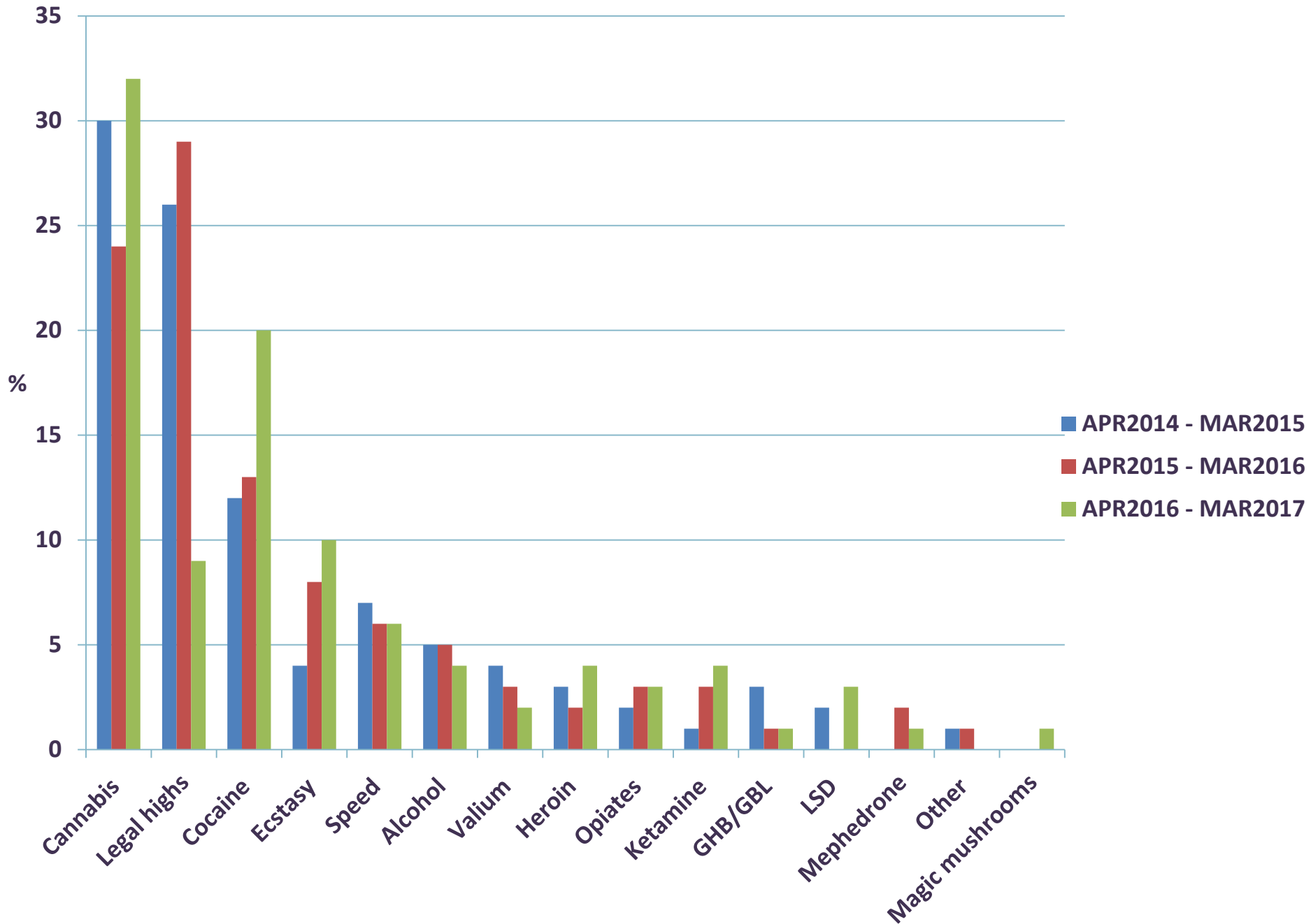
POLICIES

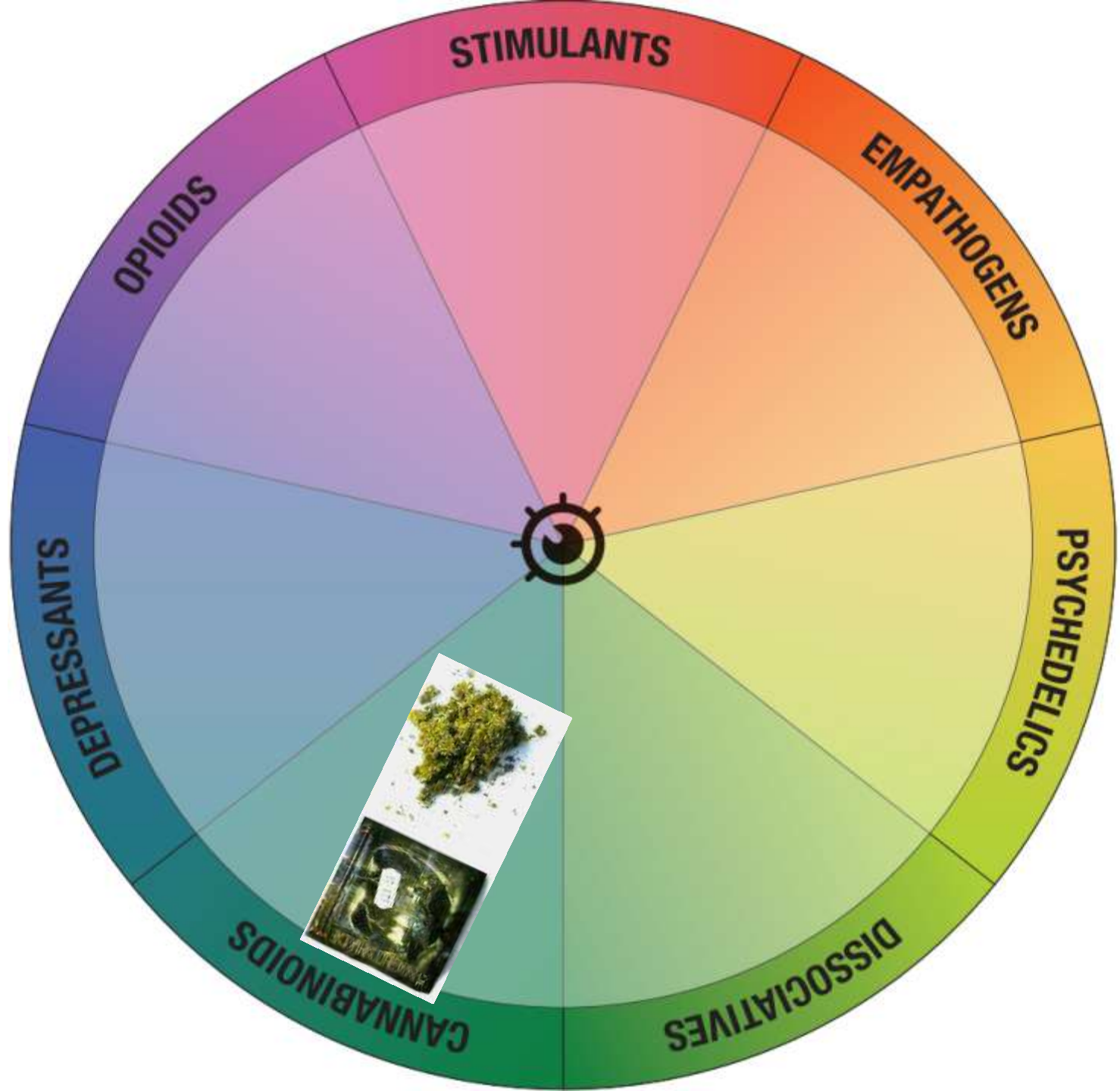
FAQS

REPORT A PROBLEM

HELP

Crew Counselling Clients - Drug Use







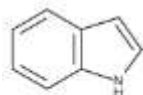
Synthetic Cannabinoids



- ❑ Normally 20-30 'doses' per 1g packet - **tolerance builds rapidly**
- ❑ Frequent **re-dosing** is common (even during the night)
- ❑ Disconnects user from reality and decreases motivation
- ❑ **Difficult to engage** in services
- ❑ Side effects include: paranoia, depression and **suicidal ideation**
- ❑ Recent hospital admissions show **kidney damage** + low blood sugar
- ❑ Withdrawal effects include seizures, insomnia, cravings and vomiting
- ❑ Effects dependant on **chemical to plant ratio**
- ❑ If taking SC powder use microgram scales to **measure dose**
- ❑ **Passive smoking** can induce effects
- ❑ **Third generation are Class B drugs as of 14 DEC 2016.**

The following paragraph to be inserted in the Misuse of Drugs Regulations, in Schedule 1, Paragraph 1, after paragraph (lc) as paragraph (ld):

“any compound (not being clonitazene, etonitazene, acemetacin, atorvastatin, bazedoxifene, indometacin, losartan, olmesartan, proglumetacin, telmisartan, viminol, zafirlukast or a compound for the time being specified in sub-paragraphs (h) to (lc) above) structurally related to 1-pentyl-3-(1-naphthoyl)indole (JWH-018), in that the four sub-structures, that is to say the indole ring, the pentyl substituent, the methanone linking group and the naphthyl ring, are linked together in a similar manner, whether or not any of the sub-structures have been modified, and whether or not substituted in any of the linked sub-structures with one or more univalent substituents and, where any of the sub-structures have been modified, the modifications of the sub-structures are limited to any of the following, that is to say—



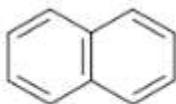
Indole



Phenyl

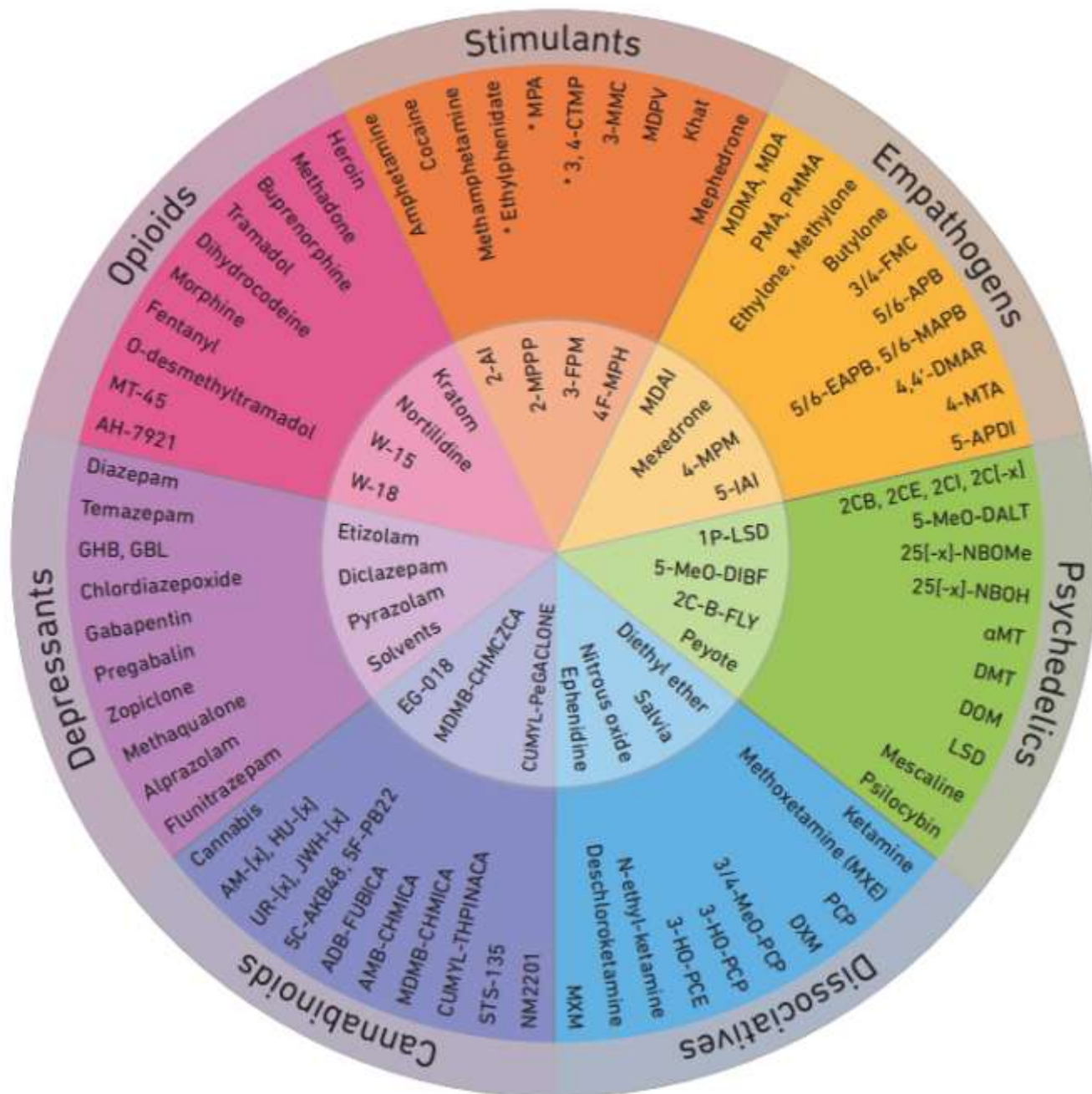
Linking Groups

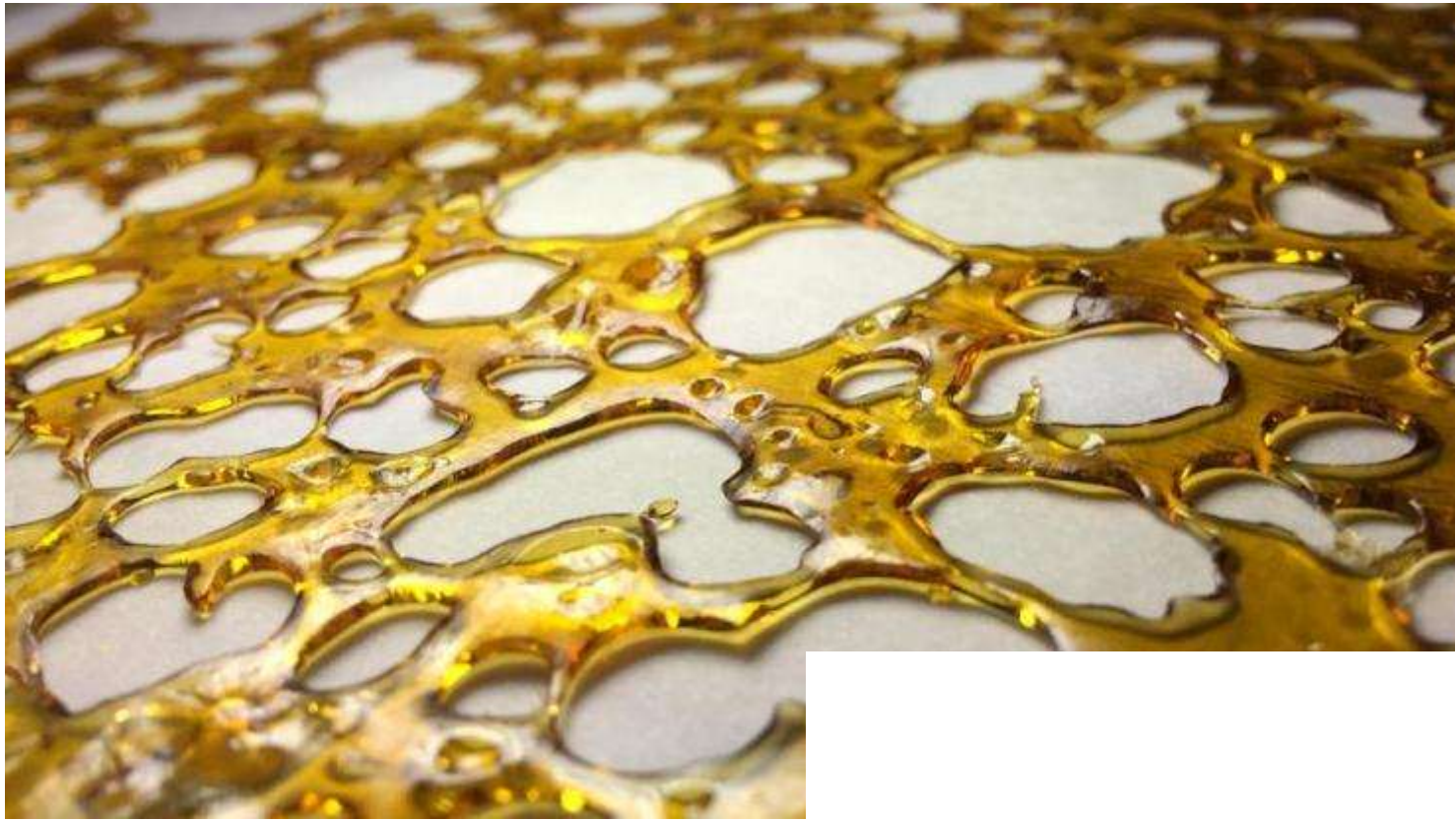
Methanone (-CO-)



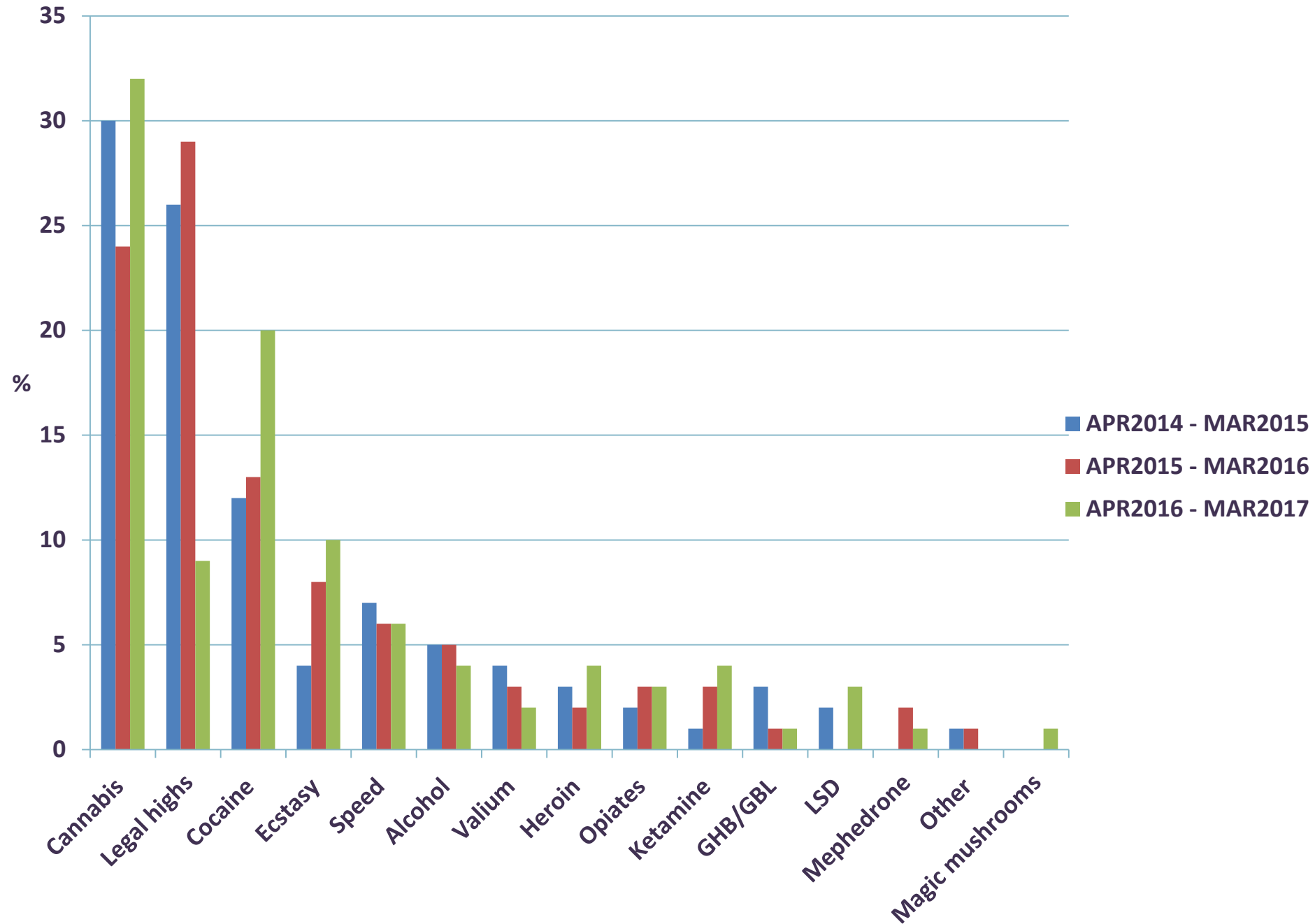
Naphthyl

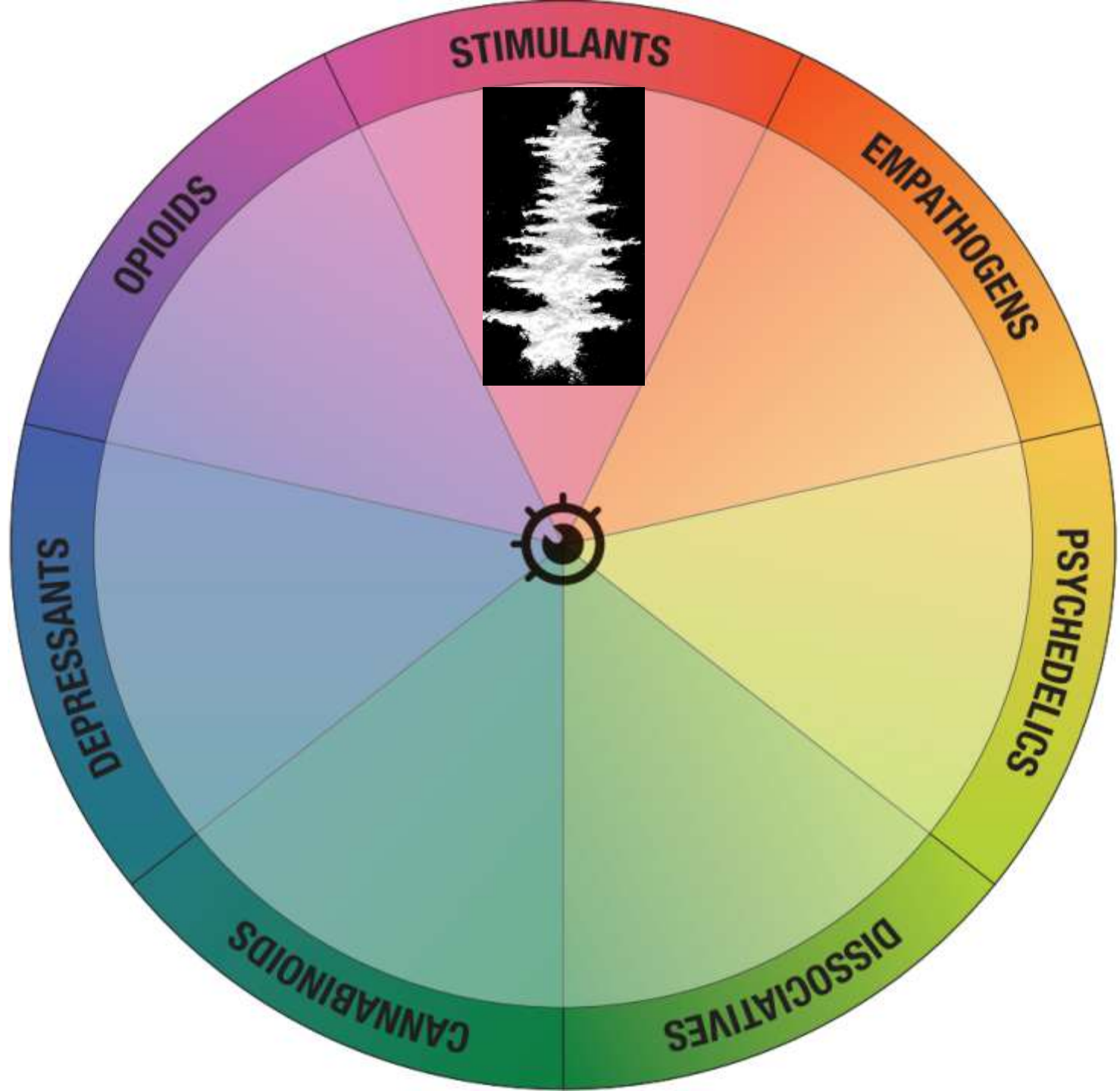
- (i) replacement of the indole ring with indane, indene, indazole, pyrrole, pyrazole, imidazole, benzimidazole, pyrrolo[2,3-b]pyridine, pyrrolo[3,2-c]pyridine or pyrazolo[3,4-b]pyridine;
- (ii) replacement of the pentyl substituent with alkyl, alkenyl, benzyl, cycloalkylmethyl, cycloalkylethyl, (N-methylpiperidin-2-yl)methyl, 2-(4-morpholinyl)ethyl or (tetrahydropyran-4-yl)methyl;
- (iii) replacement of the methanone linking group with an ethanone, carboxamide, carboxylate, methylene bridge or methine group;
- (iv) replacement of the 1-naphthyl ring with 2-naphthyl, phenyl, benzyl, adamantyl, cycloalkyl, cycloalkylmethyl, cycloalkylethyl, bicyclo[2.2.1]heptanyl, 1,2,3,4-tetrahydronaphthyl, quinolinyl, isoquinolinyl, 1-amino-1-oxopropan-2-yl, 1-hydroxy-1-oxopropan-2-yl, piperidinyl, morpholinyl, pyrrolidinyl, tetrahydropyranyl or piperazinyl.”;





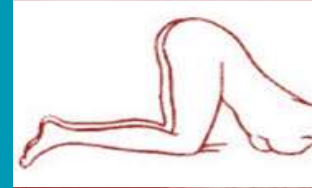
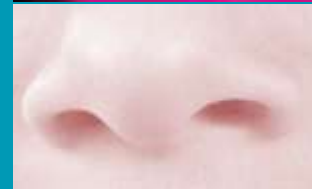
Crew Counselling Clients - Drug Use

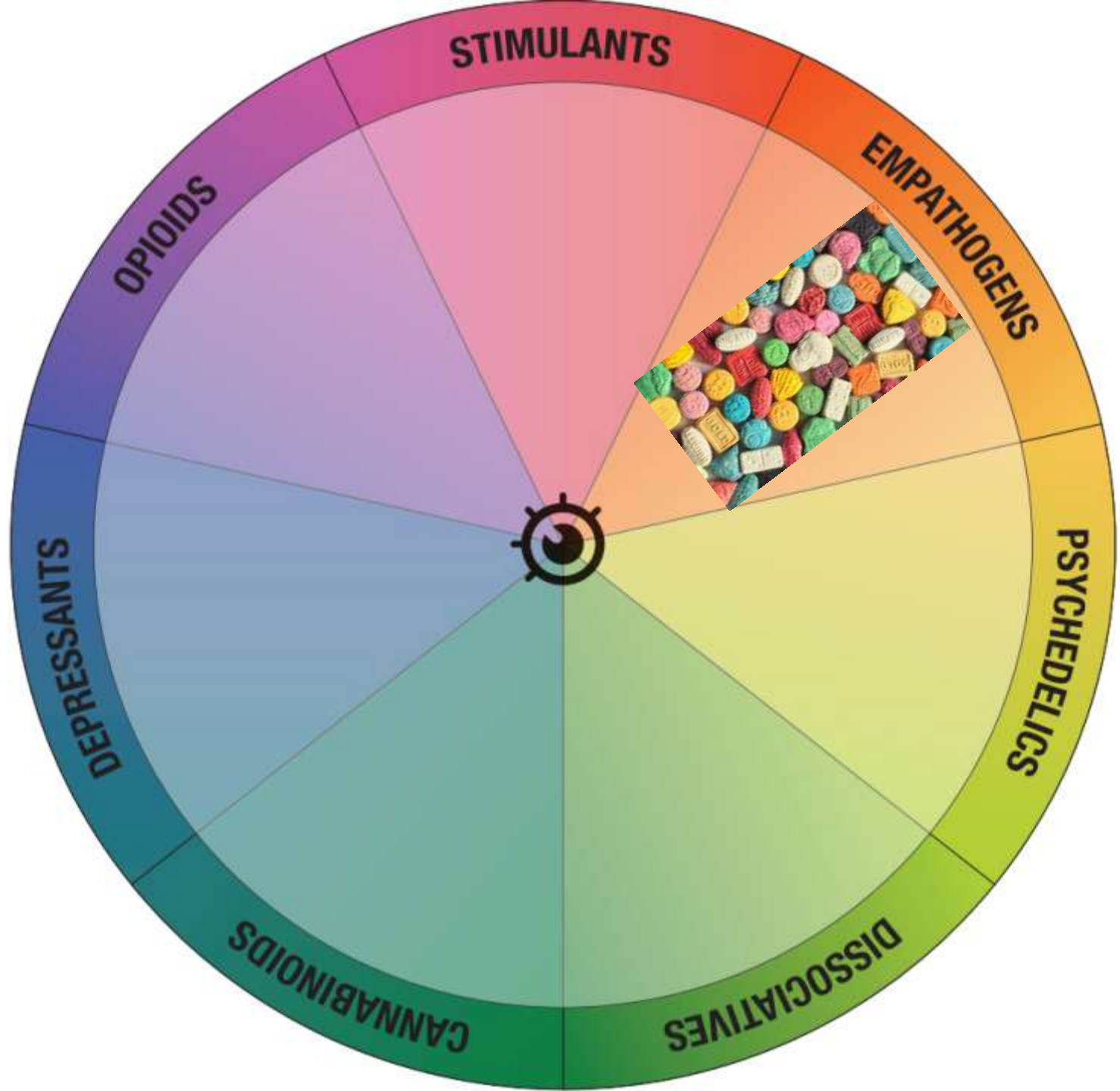




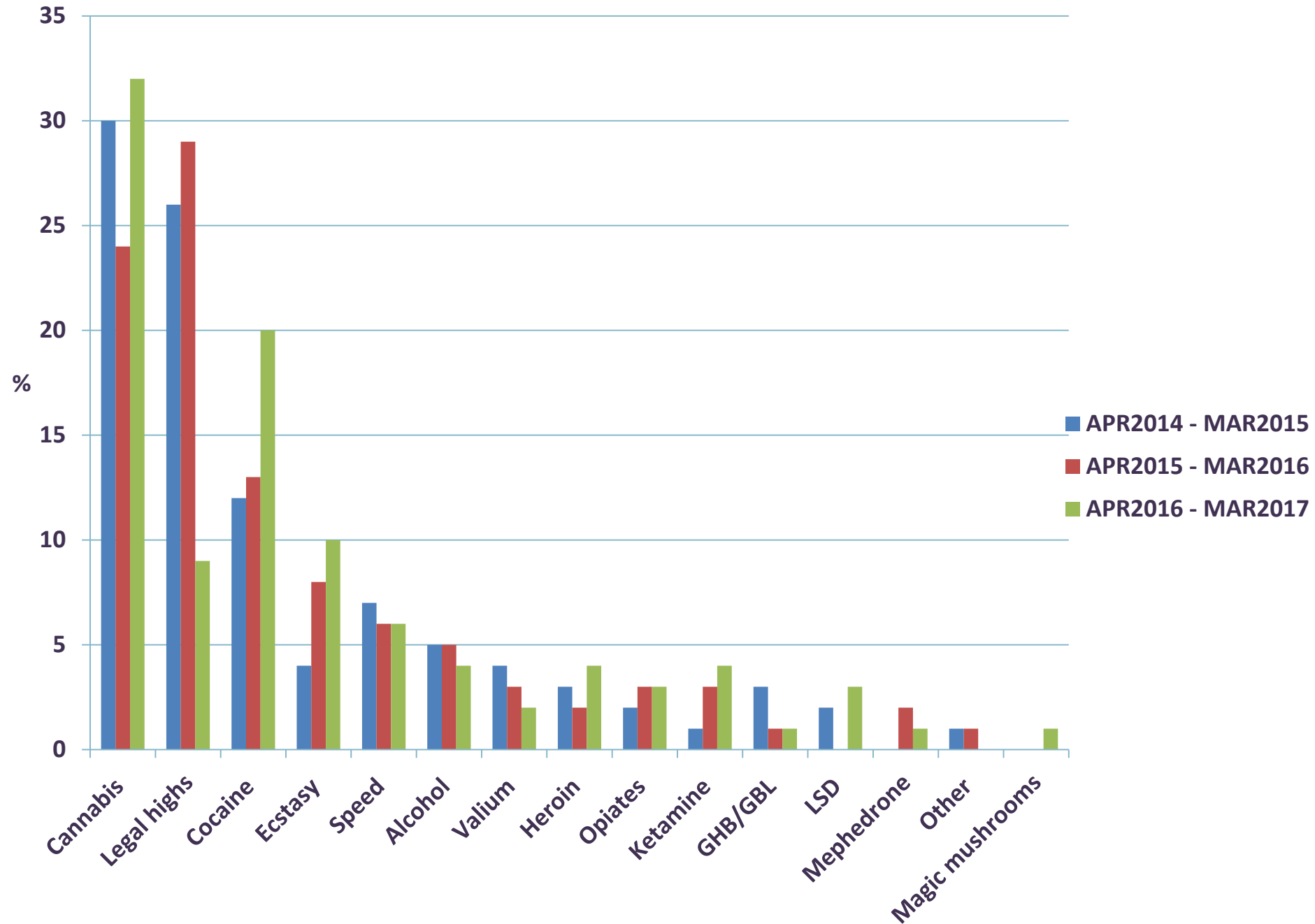
Cocaine and other stimulants

- ❑ Taking higher doses increases **negative effects**
- ❑ 'Moorish' - **re-dosing** is common
- ❑ Increase energy, motivation and confidence
- ❑ **Decrease the desire to sleep and eat**
- ❑ Can increase paranoia and can mask effects of alcohol and other drugs
- ❑ Use associated with **risky sexual behaviour**
- ❑ Withdrawal effects include agitation, insomnia, cravings
- ❑ Injecting is the most risky route of administration. **Soft tissue damage** can also occur when snorting.





Crew Counselling Clients - Drug Use



MDMA (Class A)

AKA – ecstasy, pills,
cowies, e's, eccies,
sweeties, wee fellas,
smarties, swedgers, logo
on the front



Peace – Love – Rock
& Roll



Hello Kitty



Ying and Yang

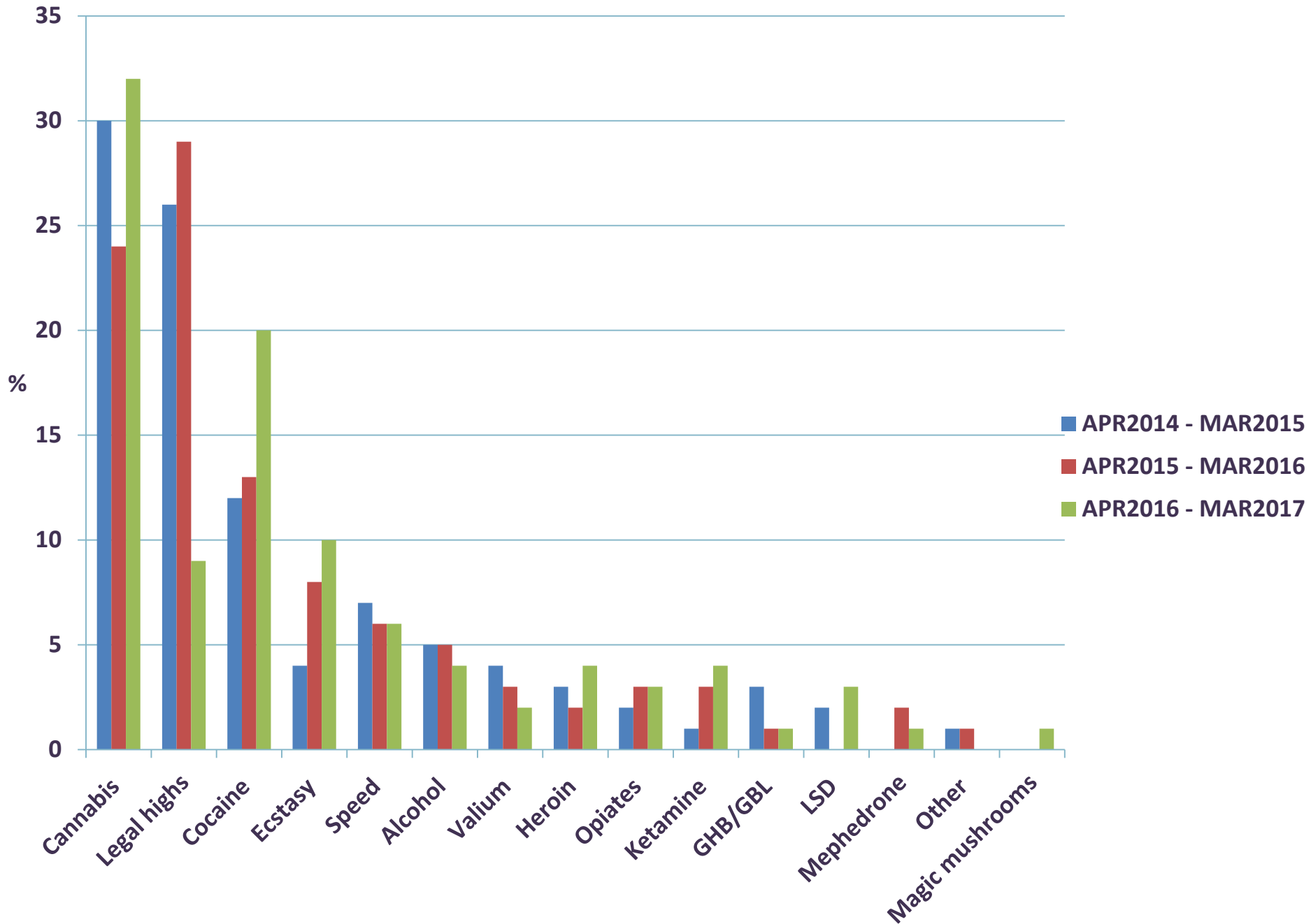


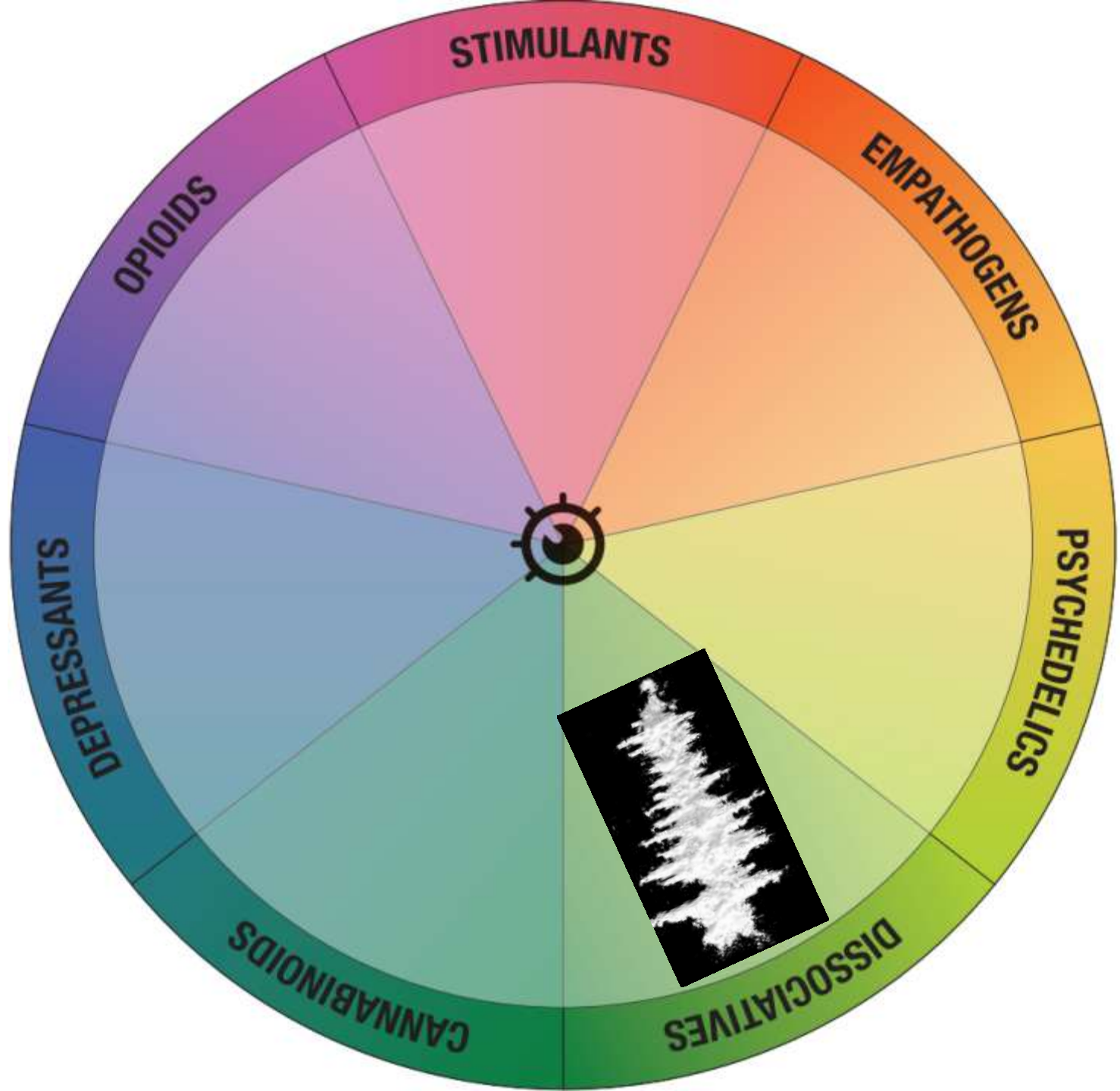
Various mobile phone logos*





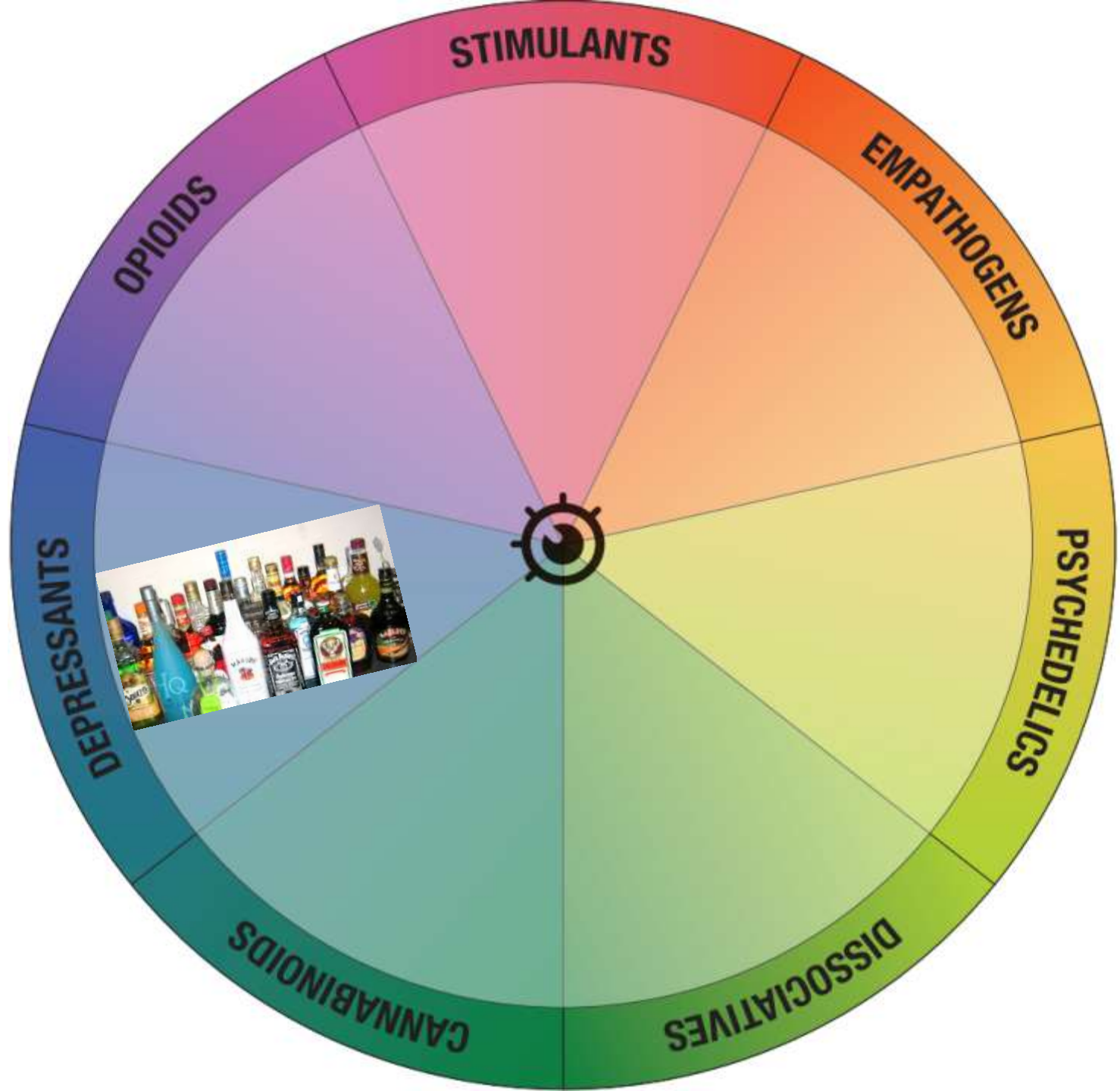
Crew Counselling Clients - Drug Use







Drug Related Deaths (stats released 15/08/17)



Prescription Drugs

Tramadol



Diazepam



Methadone



Gabapentin

Pregabalin



Suboxone/
Subutex



GPs warned as gabapentinoids are linked to heroin overdose deaths

11 May 2017 | By Sally Nash



Share



Print



Save



Comments (3)



SHARE ON FACEBOOK



SHARE ON TWITTER



EMAIL TO A FRIEND



GPs should consider alternatives to the prescription drugs pregabalin and gabapentin, according to a new study that suggests a recent substantial increase in prescriptions is closely correlated with a rise in the number of overdose deaths in England and Wales.

The use of gabapentinoids is 'especially dangerous when used with heroin or other opioids', according to the new University of Bristol findings published in [Addiction](#).

Pregabalin and gabapentin were originally used to treat epilepsy but more recently have also been used to treat neuropathic pain, anxiety, insomnia and other mental illnesses.

The study points to recent figures that show prescriptions for these drugs rose from one million in 2004 to 10.5m in 2015, a 24% year-on-year increase.

Meanwhile, the number of deaths in England and Wales involving gabapentinoids increased from fewer than one per year before 2009 to 137 in 2015, of which 79% also involved opioids such as heroin.

The team suggests that 'alternatives to gabapentinoids need to be recommended for clinicians managing opioid dependent patients with

RELATED ARTICLES

Prescribing quinine for muscle cramps 'may lead to increased mortality'

17 May 2017

Working in a homeless hostel

07 Mar 2017

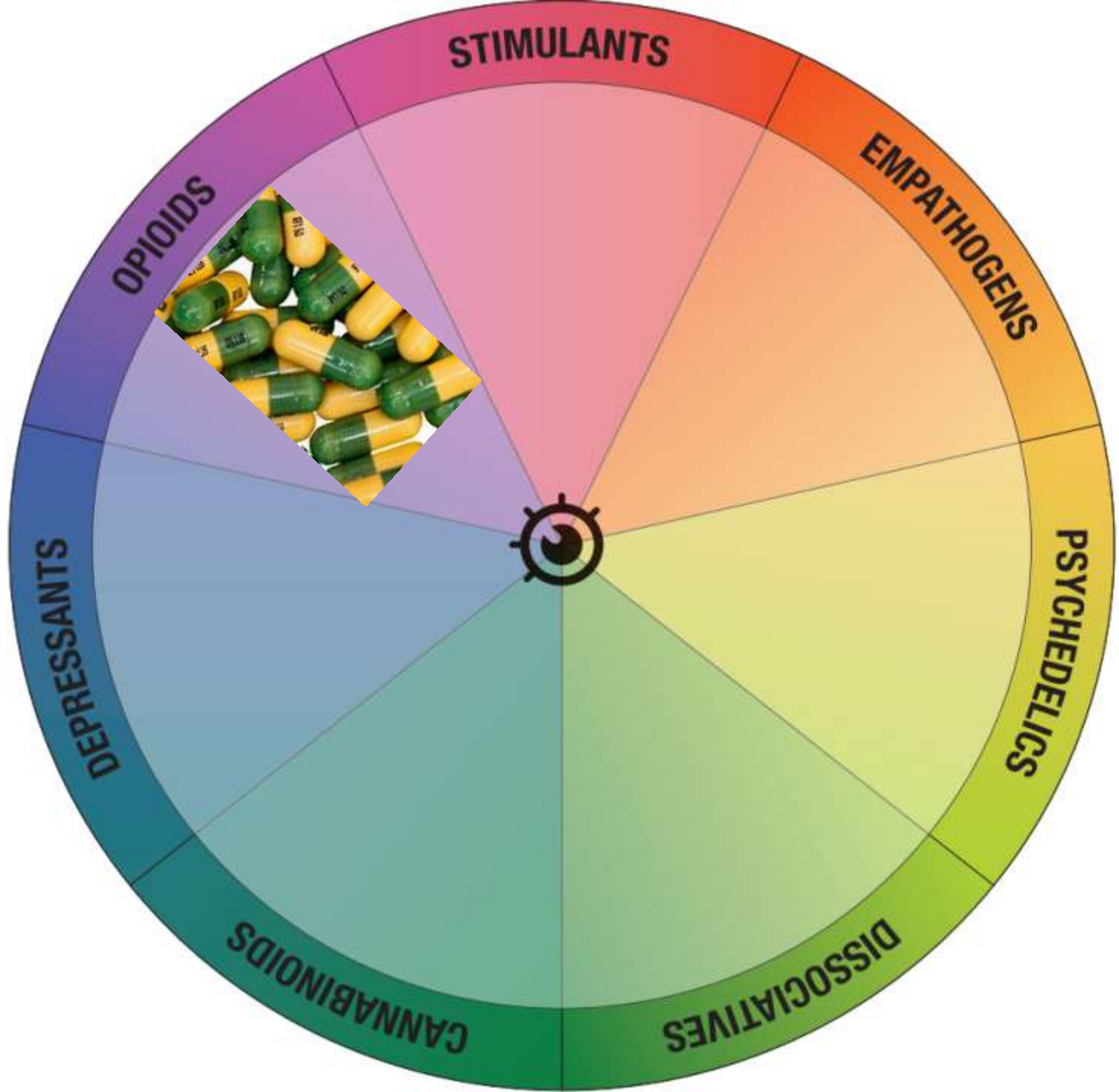
Depressants (downers)

- ❑ Unlicensed **benzodiazepenes**
- ❑ Commonly used with other drugs – **polydrug use**
- ❑ Easy to build a **tolerance** to
- ❑ Promotes relaxation and **reduces anxiety**
- ❑ Can cause **confusion, aggression, lowered inhibitions and loss of memory**
- ❑ Withdrawal effects can be **prolonged** and may include depression, lethargy, 'feelings of dying' cramps and seizures
- ❑ Class C as of 31 MAY 2017



Class C on 31 MAY 2017

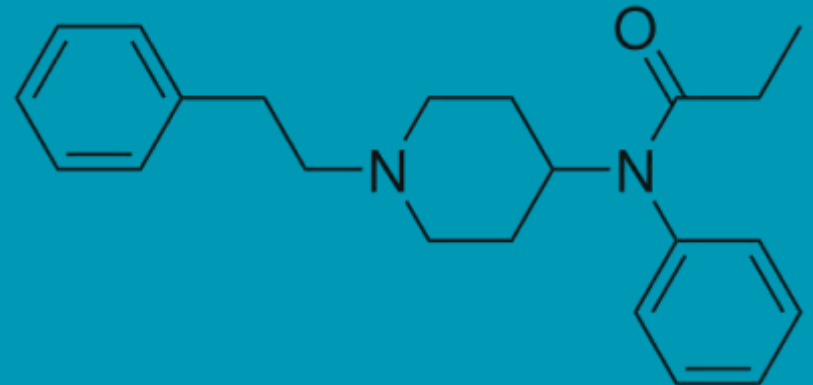
- ❑ Etizolam
- ❑ Diclazepam
- ❑ Flubromazepam
- ❑ Pyrazolam
- ❑ Deschloroetizolam
- ❑ Flubromazolam
- ❑ Nitrazolam
- ❑ Nifoxipam
- ❑ Clonazolam
- ❑ 4'-Chlorodiazepam
- ❑ Bromazolam
- ❑ Meclonazepam
- ❑ Adinazolam
- ❑ Metizolam
- ❑ 3-Hydroxyphenazepam
- ❑ Fonazepam





Fentanyl(s)

- █ Synthetic opiate used to manage severe, chronic pain.
- █ Short lasting, active in the **microgram range**
- █ Analogues include acrylfentanyl + carfentanyl.
- █ Can make you feel calm, relaxed and deeply secure.
- █ As this drug reduced heart rate and breathing it increase the chances of an overdose.
- █ Implications for ORT.



Summary

- █ Multiple pieces of legislation, not just the PSA
- █ Some people have stopped but those that continue experience more harm
- █ Injecting stimulant NPS has reduced
- █ Some people are living with life changing conditions
- █ SCRA remains high in prisons
- █ Unlicensed benzodiazepine use remains high
- █ Rise in cocaine, MDMA, cannabis, ketamine, LSD, prescription drugs (gabapentinoids) and solvents.

Thanks!



[BEEN HERE BEFORE?]

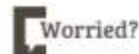
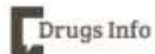
[Log in →](#)

[Forgotten Password?](#)
[Not Registered?](#)

[GET IN TOUCH]

0131 220 3404

mycrew@crew2000.org.uk

[Contact Us →](#)[Website feedback](#)

Home

Log, track and plan
your use with the
new **MY CREW** app



Available for android phones
from Google Play store.

For more information contact
mycrew@crew2000.org.uk



[Welcome to MY CREW]

A place where you'll find impartial drugs information, advice and support.

www.crew2000.org.uk